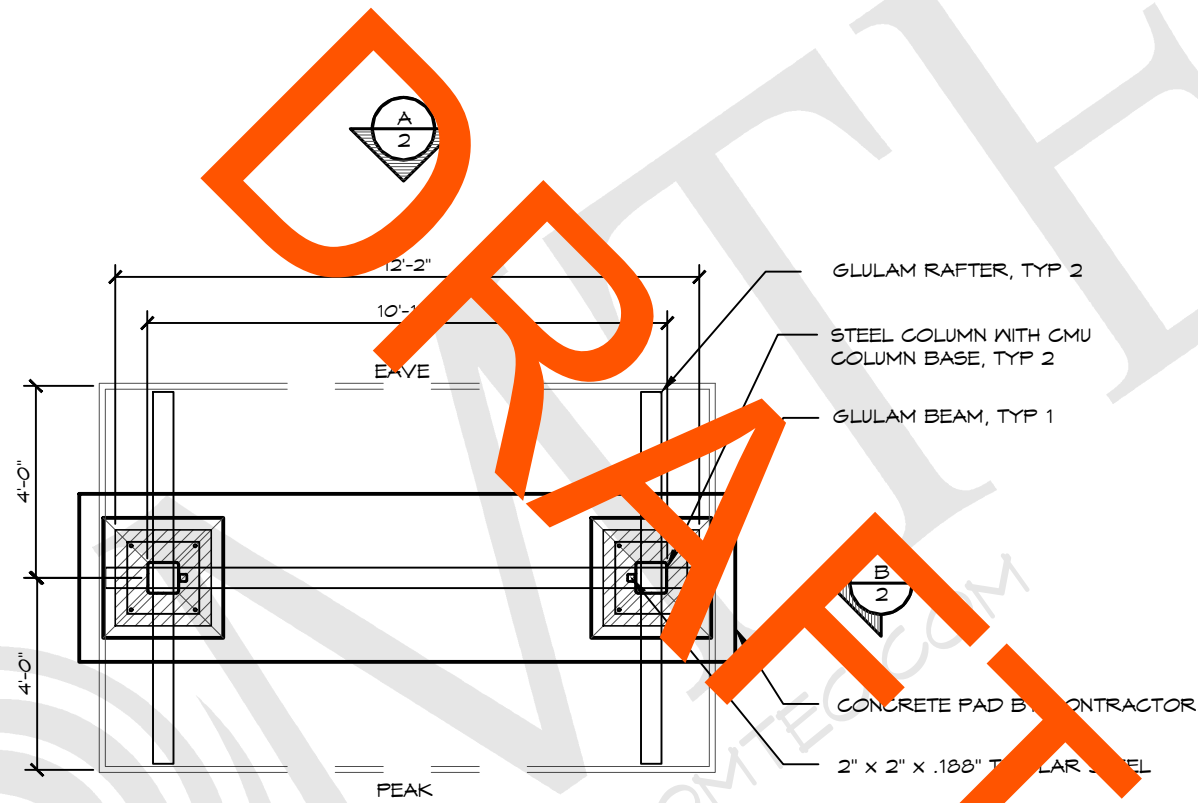
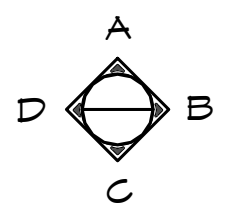


WALL TYPE SCHEDULE

	8" REINFORCED CONCRETE MASONRY BLOCK WALL WITH MORTAR JOINTS, GROUTED SOLID ALL CELLS RUNNING BOND PATTERN.
---	---



1 FLOOR PLAN
SCALE: 1/4" = 1'-0"



THESE PLAN VIEW AND ELEVATION DRAWINGS ARE A PRELIMINARY ARCHITECTURAL REPRESENTATION OF THE BUILDING. ALL DIMENSIONS, FEATURES AND COMPONENTS SHOWN ON THESE PRELIMINARY DRAWINGS MAY OR MAY NOT BE PART OF THE QUOTE. PLEASE REFER TO THE "SCOPE OF SUPPLY AND SERVICES" LETTER PROVIDED WITH YOUR QUOTE FOR ROMTEC'S PROPOSED SCOPE OF SUPPLY.

© 2023 ROMTEC, INC. ALL RIGHTS RESERVED. THESE PLANS AND DRAWINGS MAY NOT BE REPRODUCED, ADAPTED OR FURTHER DISTRIBUTED, AND NO BUILDINGS MAY BE CONSTRUCTED FROM THESE PLANS, WITHOUT THE WRITTEN PERMISSION OF ROMTEC, INC.

ROMTEC
18240 NORTH BANK ROAD - ROSEBURG, OR 97470
(541) 496-3541 FAX (541) 496-0803

PRELIMINARY

PROJECT:
**HBH CONSULTING ENGINEERS
ROCKAWAY BEACH ANCHOR STREET PARK (KIOSK)
ROCKAWAY BEACH, OREGON**

PROJECT#:
1995B

DATE:
3/07/23

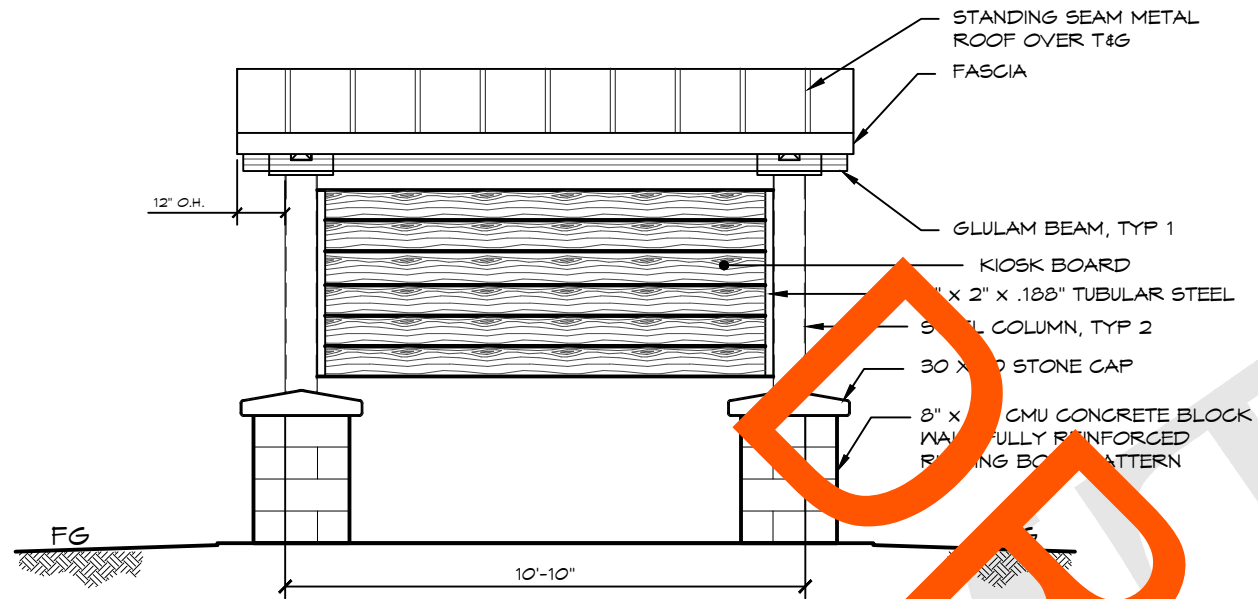
REVISIONS

REV.	DATE	BY

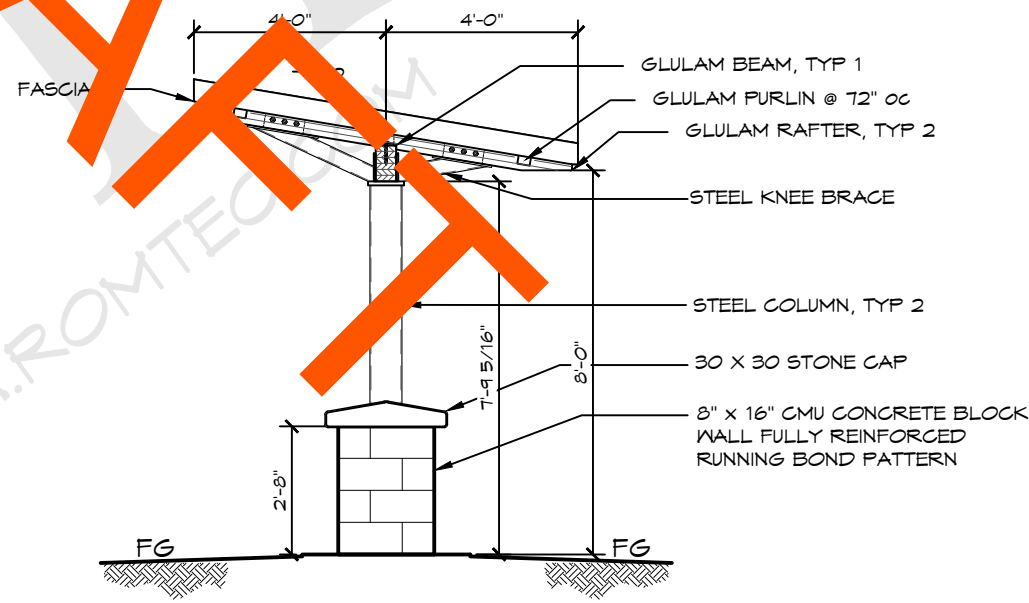
DRAWN BY:
CR

SHEET TITLE: FLOOR PLAN

SHEET NO.
01



A ELEVATION VIEW
SCALE: 1/4" = 1'-0"



B ELEVATION VIEW
SCALE: 1/4" = 1'-0"

ROMTEC

18240 NORTH BANK ROAD - ROSEBURG, OR 97470
(541) 496-3541 FAX (541) 496-0803

PRELIMINARY

© 2023 ROMTEC, INC. ALL RIGHTS RESERVED. THESE PLANS AND DRAWINGS MAY NOT BE REPRODUCED, ADAPTED OR FURTHER DISTRIBUTED, AND NO BUILDINGS MAY BE CONSTRUCTED FROM THESE PLANS, WITHOUT THE WRITTEN PERMISSION OF ROMTEC, INC.

PROJECT:
HBH CONSULTING ENGINEERS
ROCKAWAY BEACH ANCHOR STREET PARK (KIOSK)
ROCKAWAY BEACH, OREGON

PROJECT#: 1995B

DATE: 3/07/23

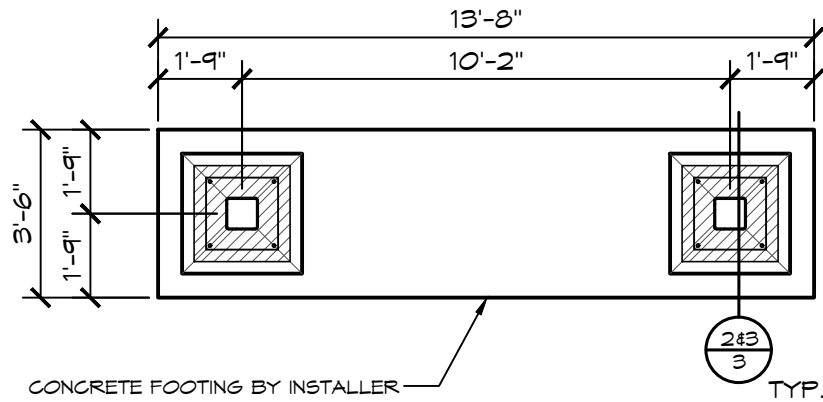
REVISIONS

REV.	DATE	BY

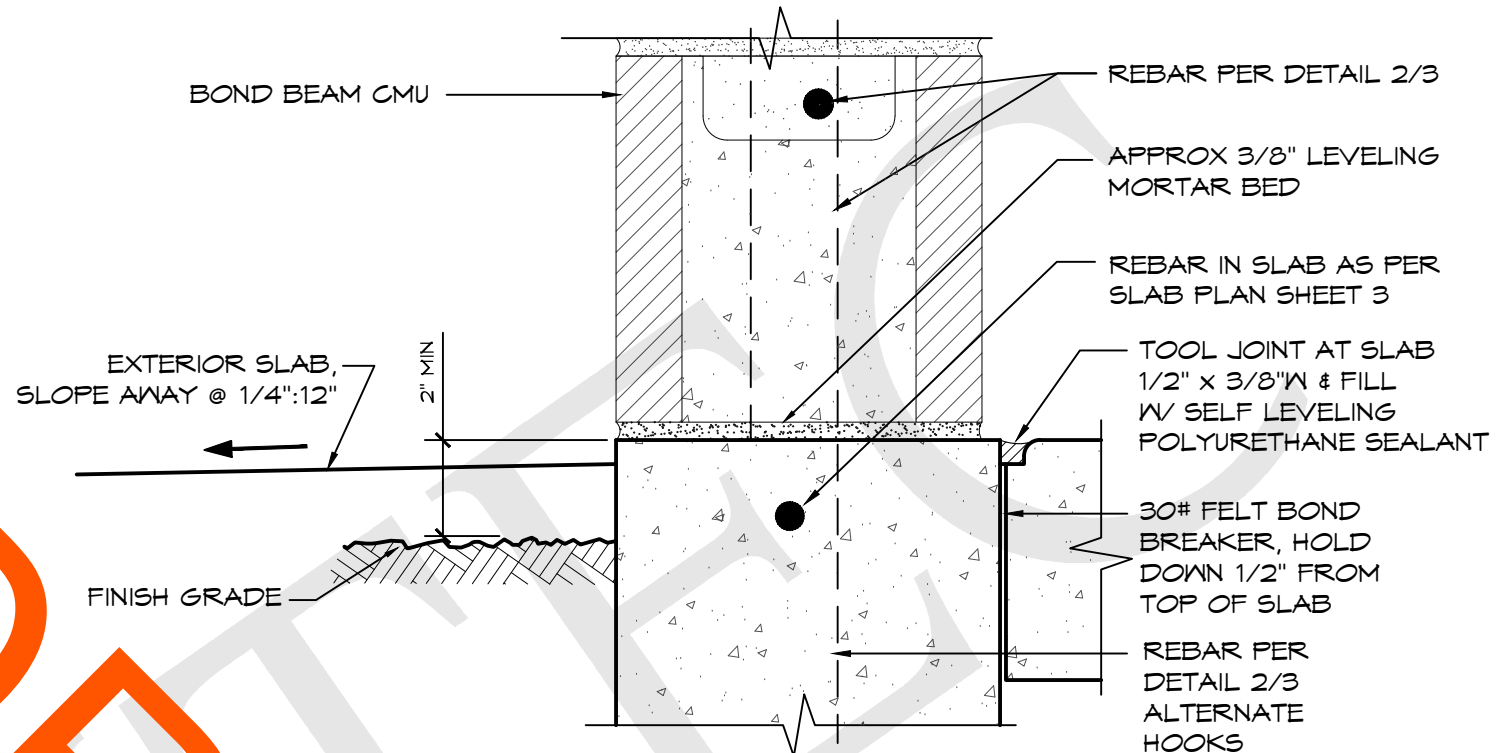
DRAWN BY: CR

SHEET NO.

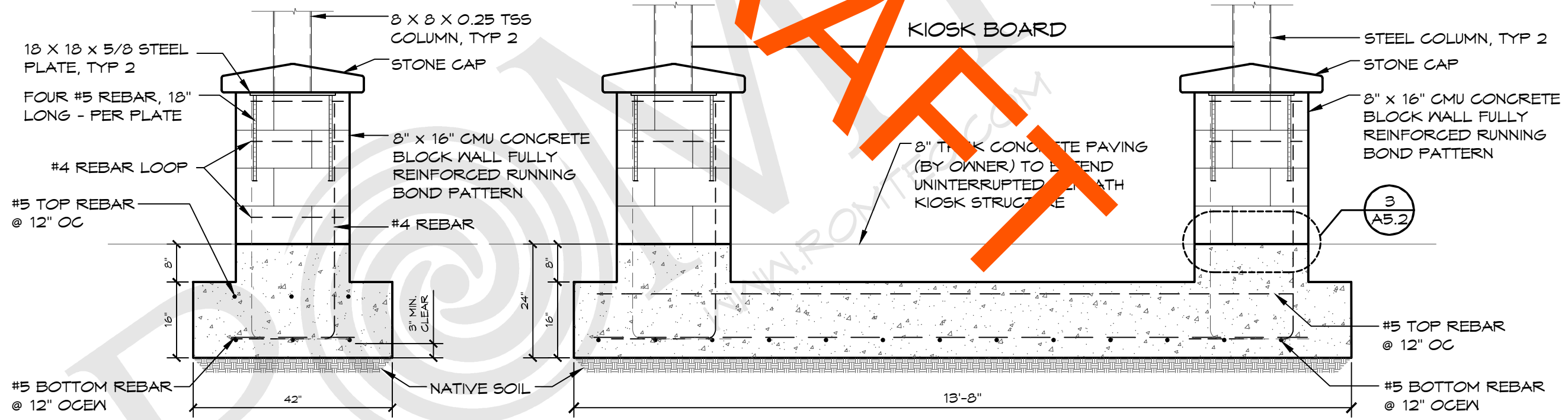
02



1 FOUNDATION PLAN
SCALE: 1/4" = 1'-0"



3 WALL-SLAB CONNECTION
SCALE: 3" = 1'-0"



2 FOOTING DETAIL
SCALE: 1/2" = 1'-0"

© 2023 ROMTEC, INC. ALL RIGHTS RESERVED. THESE PLANS AND DRAWINGS MAY NOT BE REPRODUCED, ADAPTED OR FURTHER DISTRIBUTED, AND NO BUILDINGS MAY BE CONSTRUCTED FROM THESE PLANS, WITHOUT THE WRITTEN PERMISSION OF ROMTEC, INC.

PROJECT: **HBH CONSULTING ENGINEERS
ROCKAWAY BEACH ANCHOR STREET PARK (KIOSK)
ROCKAWAY BEACH, OREGON**

SHEET TITLE: **BID DOC DETAILS**

PROJECT#: **1995B**

DATE: **3/07/23**

REVISIONS

REV.	DATE	BY

DRAWN BY: **CR**

SHEET NO. **03**