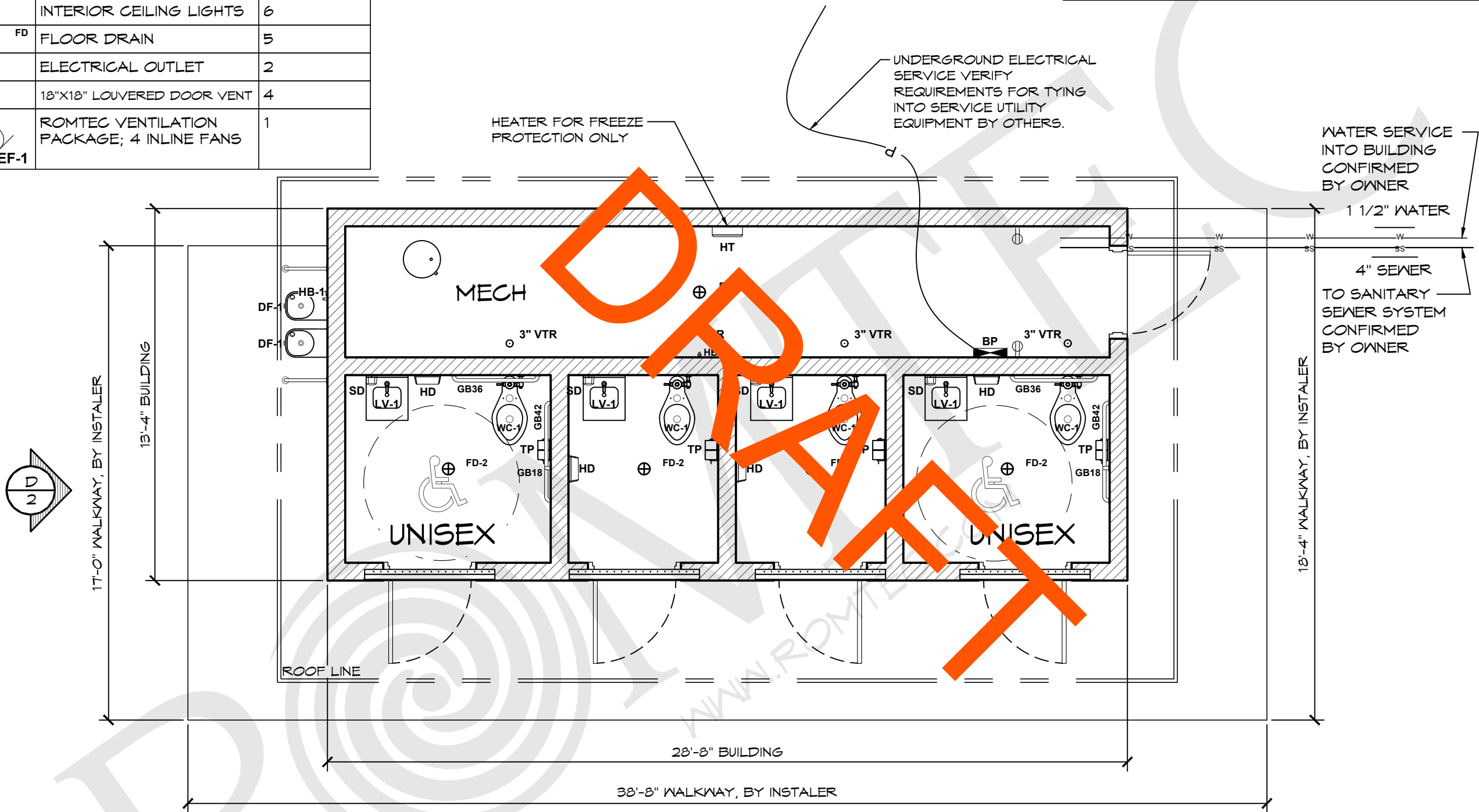


LEGEND		
SYMBOL	DESCRIPTION	AREA/ QUANTITY
	RIDGE WINDOW	4
	EXTERIOR WALL LIGHTS	6
	INTERIOR CEILING LIGHTS	6
FD	FLOOR DRAIN	5
	ELECTRICAL OUTLET	2
	18"X18" LOUVERED DOOR VENT	4
EF-1	ROMTEC VENTILATION PACKAGE; 4 INLINE FANS	1

WALL TYPE SCHEDULE	
	8" REINFORCED CONCRETE MASONRY BLOCK WALL WITH MORTAR JOINTS, GROUTED SOLID ALL CELLS RUNNING BOND PATTERN.



THESE PLAN VIEW AND ELEVATION DRAWINGS ARE A PRELIMINARY ARCHITECTURAL REPRESENTATION OF THE BUILDING. ALL DIMENSIONS, FEATURES AND COMPONENTS SHOWN ON THESE PRELIMINARY DRAWINGS MAY OR MAY NOT BE PART OF THE QUOTE. PLEASE REFER TO THE "SCOPE OF SUPPLY AND SERVICES" LETTER PROVIDED WITH YOUR QUOTE FOR ROMTEC'S PROPOSED SCOPE OF SUPPLY.

1

FLOOR PLAN

SCALE: 1/4" = 1'-0"

C

2

A

B

C

D

© 2023 ROMTEC, INC. ALL RIGHTS RESERVED. THESE PLANS AND DRAWINGS MAY NOT BE REPRODUCED, ADAPTED OR FURTHER DISTRIBUTED, AND NO BUILDINGS MAY BE CONSTRUCTED FROM THESE PLANS, WITHOUT THE WRITTEN PERMISSION OF ROMTEC, INC.

PROJECT:  
HBH CONSULTING ENGINEERS  
ROCKAWAY BEACH ANCHOR STREET PARK (RESTROOM)  
ROCKAWAY BEACH, OREGON

PROJECT#:  
1995A

DATE:  
3/06/23

REVISIONS

REV.	DATE	BY

DRAWN BY:  
CR

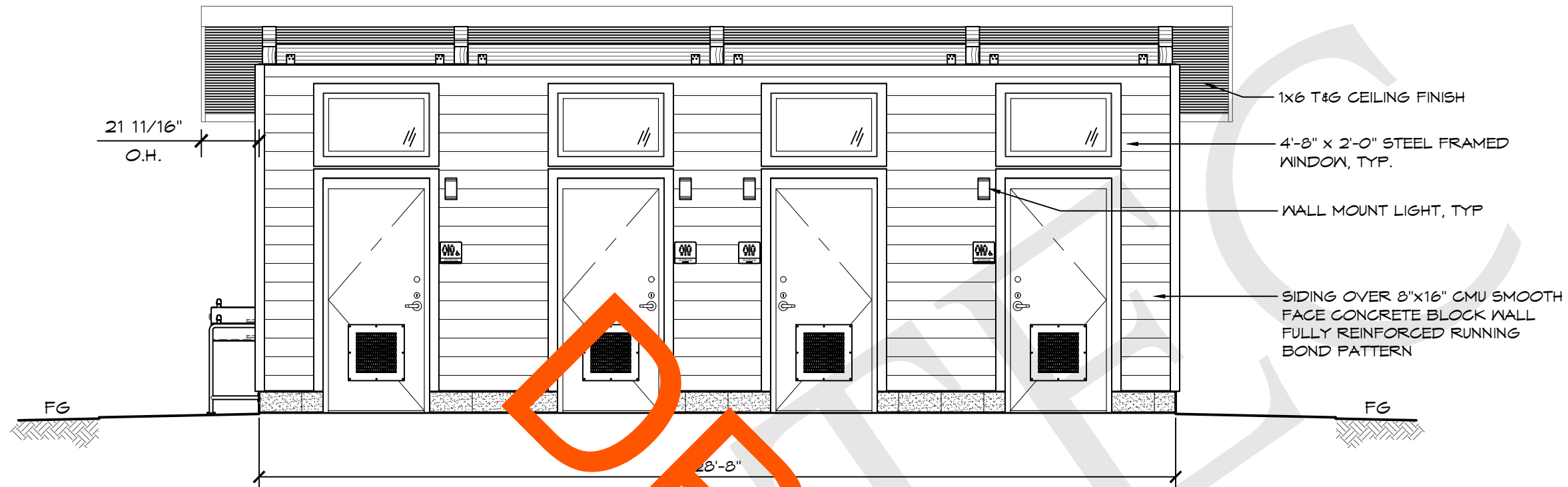
SHEET NO.  
01

ROMTEC

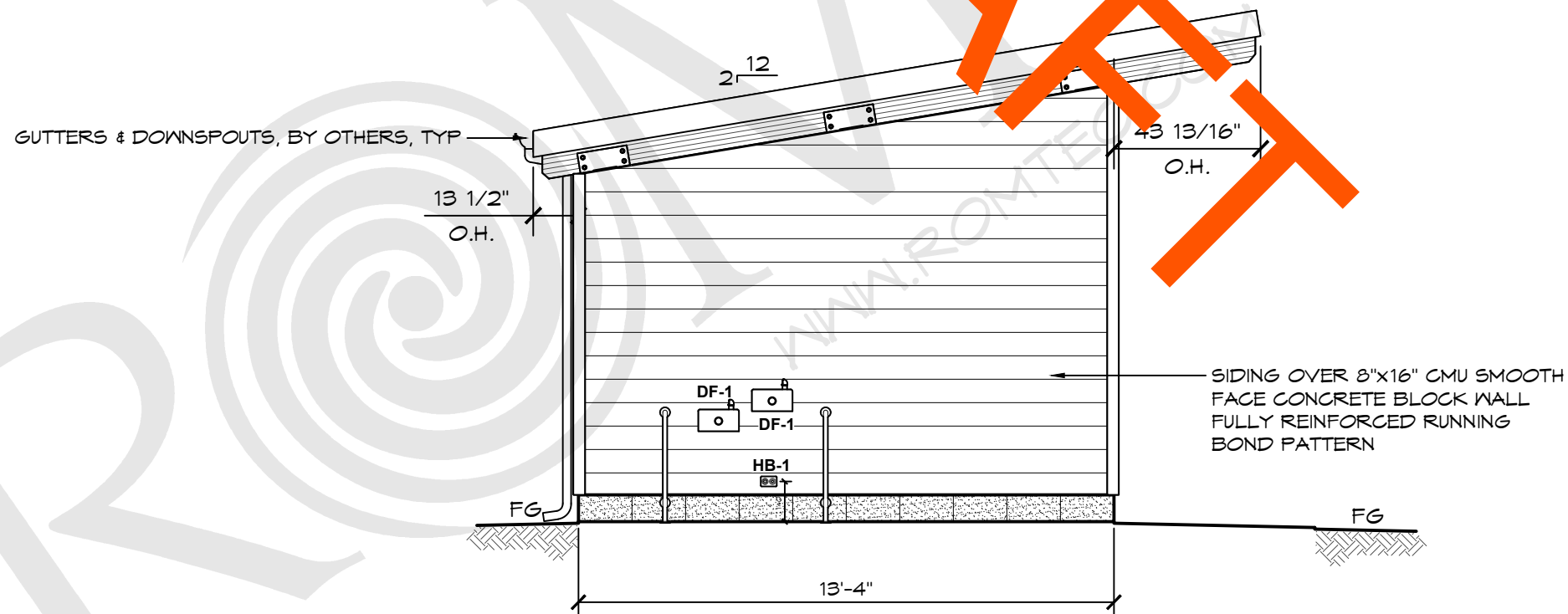
18240 NORTH BANK ROAD - ROSEBURG, OR 97470  
(541) 496-3541 FAX (541) 496-0803

PRELIMINARY





**C** ELEVATION VIEW  
SCALE: 1/4" = 1'-0"



**D** ELEVATION VIEW  
SCALE: 1/4" = 1'-0"

**ROMTEC**

18240 NORTH BANK ROAD - ROSEBURG, OR 97470  
(541) 496-3541 FAX (541) 496-0803

**PRELIMINARY**

© 2023 ROMTEC, INC. ALL RIGHTS RESERVED. THESE PLANS AND DRAWINGS MAY NOT BE REPRODUCED, ADAPTED OR FURTHER DISTRIBUTED, AND NO BUILDINGS MAY BE CONSTRUCTED FROM THESE PLANS, WITHOUT THE WRITTEN PERMISSION OF ROMTEC, INC.

PROJECT:  
HBH CONSULTING ENGINEERS  
ROCKAWAY BEACH ANCHOR STREET PARK (RESTROOM)  
ROCKAWAY BEACH, OREGON

SHEET TITLE: ELEVATION VIEW

PROJECT#: 1995A

DATE: 3/06/23

REVISIONS

REV. DATE BY

DRAWN BY: CR

SHEET NO.

02

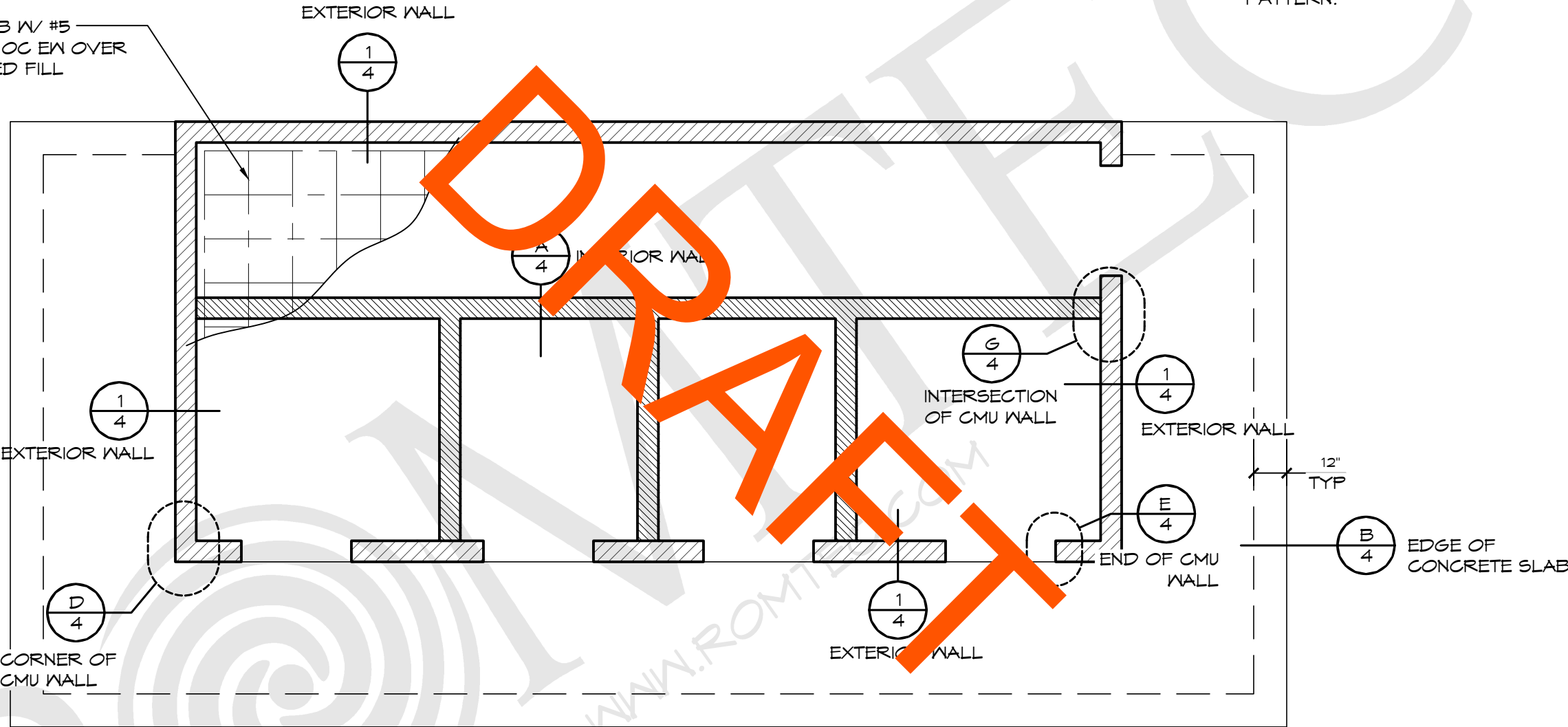


WALL TYPE SCHEDULE

EXTERIOR WALL - 8" REINFORCED CONCRETE MASONRY BLOCK WALL WITH MORTAR JOINTS, GROUTED SOLID ALL CELLS RUNNING BOND PATTERN.

INTERIOR WALL - 8" REINFORCED CONCRETE MASONRY BLOCK WALL WITH MORTAR JOINTS, GROUTED SOLID ALL CELLS RUNNING BOND PATTERN.

5" CONC SLAB W/ #5 REBAR @ 16" OC EN OVER 6" ENGINEERED FILL



1 EXAMPLE FOUNDATION  
SCALE: 1/4" = 1'-0"

ROMTEC

18240 NORTH BANK ROAD - ROSEBURG, OR 97470  
(541) 486-3541 FAX (541) 486-0803

PRELIMINARY

© 2023 ROMTEC, INC. ALL RIGHTS RESERVED. THESE PLANS AND DRAWINGS MAY NOT BE REPRODUCED, ADAPTED OR FURTHER DISTRIBUTED, AND NO BUILDINGS MAY BE CONSTRUCTED FROM THESE PLANS, WITHOUT THE WRITTEN PERMISSION OF ROMTEC, INC.

PROJECT: HBH CONSULTING ENGINEERS  
PROJECT#: 1995A  
DATE: 3/06/23  
REVISIONS  
REV. DATE: BY  
DRAWN BY: CR  
SHEET TITLE: BID DOC DETAILS

DATE: 3/06/23  
REVISIONS  
REV. DATE: BY  
DRAWN BY: CR

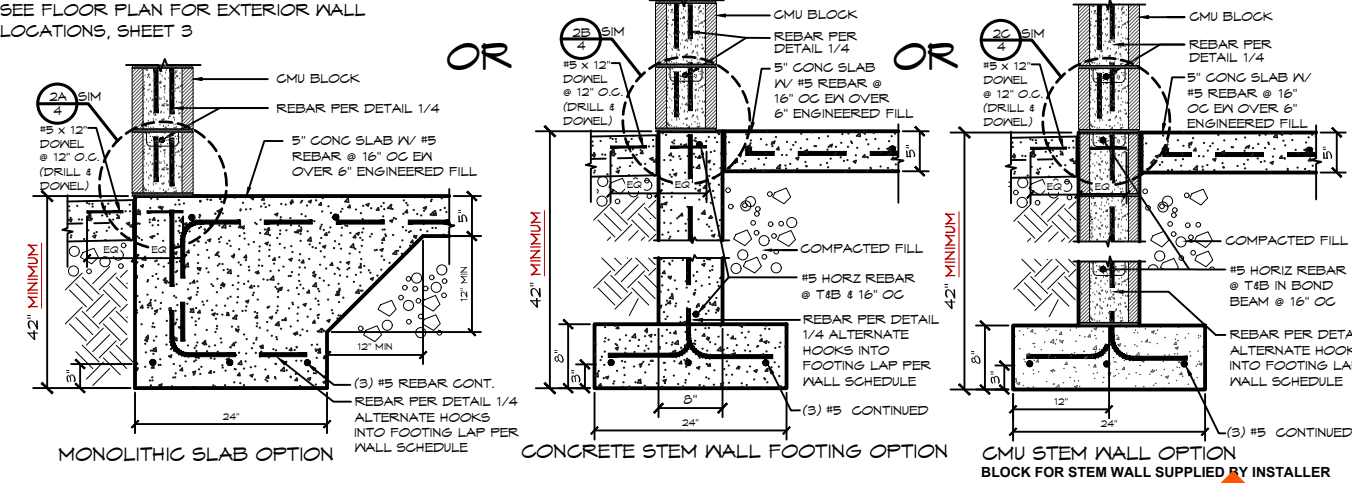
SHEET NO.

03



EXTERIOR WALL FOUNDATIONS - CHOOSE ONE OF THE FOLLOWING

SEE FLOOR PLAN FOR EXTERIOR WALL LOCATIONS, SHEET 3



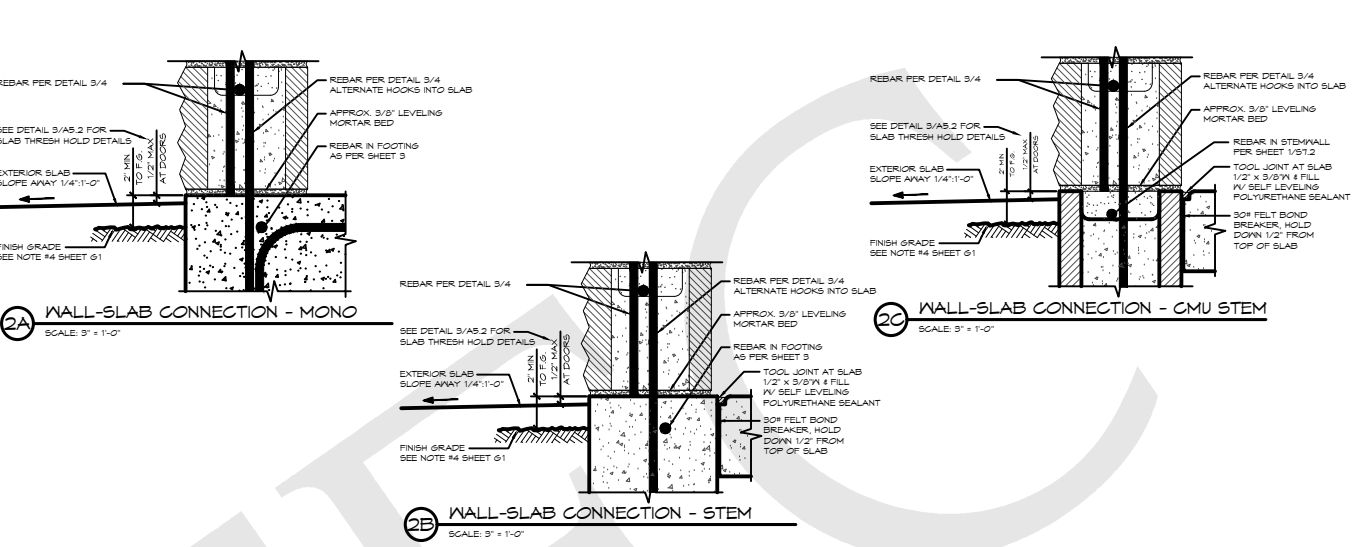
EXTERIOR WALL FOUNDATION DETAIL OPTIONS

SCALE: 1" = 1'-0"

- GENERAL NOTES:
- \* WHEN USING EITHER STEM WALL OPTION RECESS STEM WALL THE THICKNESS OF SLAB AT DOOR THRESHOLD
  - \* PRIVACY WALLS SHALL HAVE A 30" WIDE x 12" DEEP FOOTING (IF APPLICABLE)
  - \* CMU STEM WALL OPTION, CMU BLOCK IS BY INSTALLER
  - \* VERTICAL REBAR IN SLAB/STEM WALL TO MATCH VERTICAL WALL REINFORCEMENT LAP PER WALL SCHEDULE

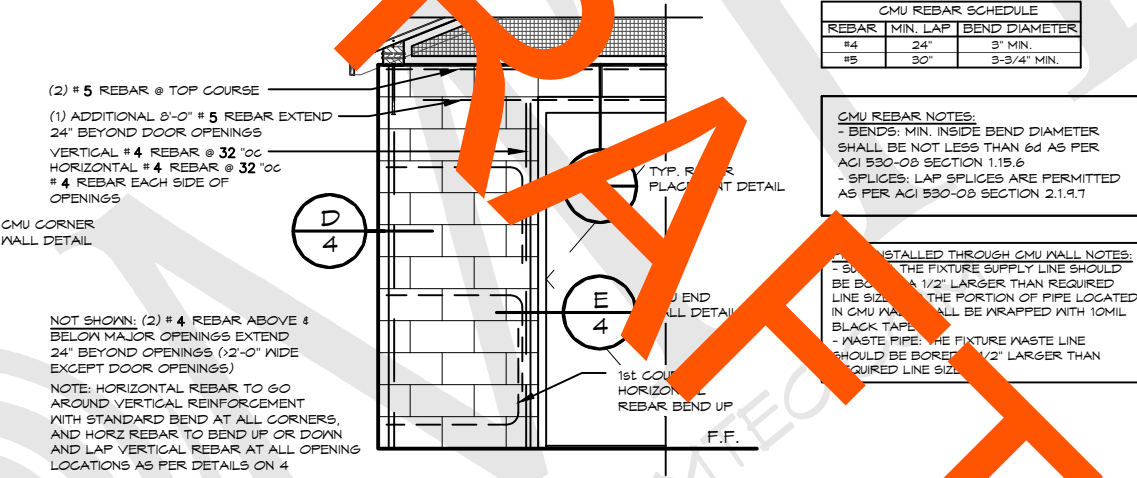
FOUNDATION DESIGN SHOWN HERE IS PRELIMINARY AND SUBJECT TO CHANGE. FINAL FOUNDATION DESIGN TO BE DETERMINED DURING THE FORTHCOMING FULL DESIGN PHASE FOR THE BUILDING. ANY INCREASED COSTS AND TIME NEEDED TO CONSTRUCT THE FINAL FOUNDATION DESIGN IS BETWEEN THE END USER AND THE BUILDING INSTALLER

EXTERIOR WALL FOUNDATIONS - PER DETAIL 1



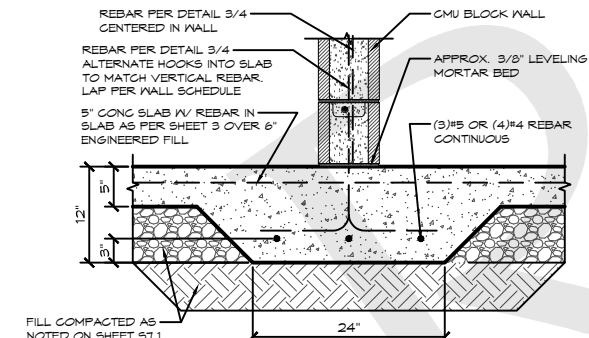
WALL-SLAB CONNECTION - MONO

WALL-SLAB CONNECTION - STEM



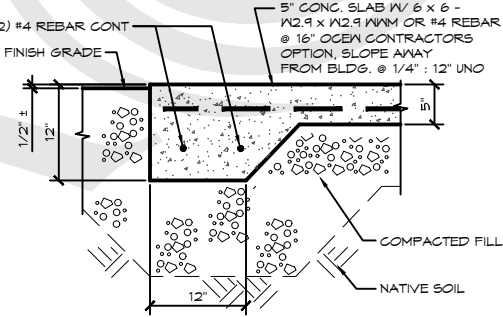
CMU REBAR LAYOUT DETAIL

SCALE: 1" = 1'-0"



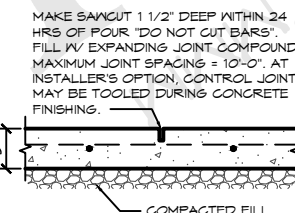
THICKENED SLAB AT INTERIOR WALL

SCALE: 2" = 1'-0"



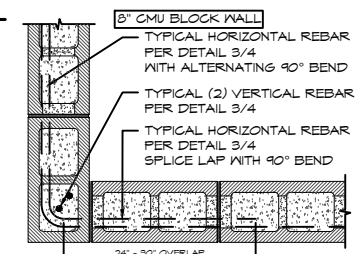
EDGE OF CONC. WALKWAY

SCALE: 2" = 1'-0"



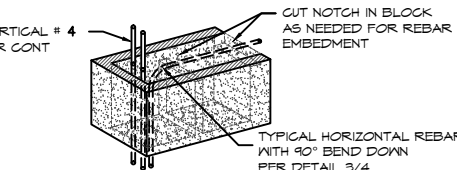
SAWCUT JOINT

SCALE: 2" = 1'-0"



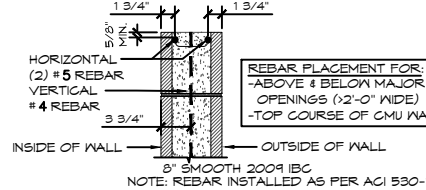
MORTAR JOINT CMU CORNER DETAIL

SCALE: 2" = 1'-0"



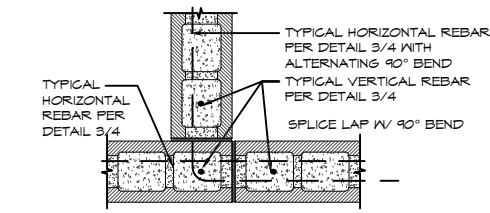
MORTAR JOINT CMU WALL END DETAIL

SCALE: 2" = 1'-0"



8" CMU REBAR PLACEMENT

SCALE: 2" = 1'-0"



8" TO 8" MORTAR JOINT CMU INTERSECTION DETAIL

SCALE: 2" = 1'-0"

© 2023 ROMTEC, INC. ALL RIGHTS RESERVED. THESE PLANS AND DRAWINGS MAY NOT BE REPRODUCED, ADAPTED OR FURTHER DISTRIBUTED, AND NO BUILDINGS MAY BE CONSTRUCTED FROM THESE PLANS, WITHOUT THE WRITTEN PERMISSION OF ROMTEC, INC.

PROJECT:  
HBH CONSULTING ENGINEERS  
ROCKAWAY BEACH ANCHOR STREET PARK (RESTROOM)  
ROCKAWAY BEACH, OREGON  
PROJECT#: 1995A

DATE: 3/06/23  
REVISIONS  
REV. DATE: BY:  
DRAWN BY: CR

SHEET NO.

04

ROMTEC  
18240 NORTH BANK ROAD - ROSEBURG, OR 97470  
(541) 496-3541 FAX (541) 496-0803  
PRELIMINARY  
SHEET TITLE: BID DOC DETAILS