



North-South Connections

- 1 EXTEND NECARNEY AVE.**
Extend Necarney Ave. to the south to connect with Timberlake Drive.
- 2 IMPROVE MILLER ST.**
Improve Miller Street as a bicycle boulevard from Manhattan Beach at the north to S. Minehaha Street at the south.
- 3 IMPROVE BEACH ACCESS** ★
Improve signage and pedestrian access at beach to designated accesses.
- 4 CONSTRUCT RECREATIONAL TRAILS AROUND LAKES**
Build a trail around Lake Lytle and Crescent Lake for pedestrian and bicycle use.

Safe Crossings of US 101

- 5 IMPROVE PRIORITY HIGHWAY CROSSINGS** —
Stripe crosswalks across US 101 at priority crossing locations (dependant on approval by State Highway Engineer).
- 6 INSTALL SIGNAL FOR EMERGENCY VEHICLES**
Install emergency activated traffic signal at South 3rd Avenue.

Improved Parking

- 7** Improve existing parking areas to make them easier to use for visitors, including better signage and accommodating RVs.
- 7a Section Line St.**
Formalize and repave county parking lot near Section Line Street.
- 7b Manhattan Beach**
Add signage along US 101 for Manhattan Beach parking area.
- 7c Downtown Core**
Look to extend existing angle parking pad north and south.
- 7d Pave City Parking Lot**
Consider allowing RVs to park overnight. Add signage to US 101.
- 7e Zoning Ordinance (Overall)**
Revise language to add parking minimums and maximums to vacalton rental properties.
- 7f Nature Preserve Parking Lot**
Coordinate with the nature preserve to develop parking near the nature trail.

Pedestrian Connectivity

- 8 IMPROVEMENTS TO CONNECT PEDESTRIANS THROUGHOUT ROCKAWAY BEACH**
- 8a Priority 1**
Continuous sidewalks on east side of US 101 within the Special Transportation Area (STA)
- 8b Priority 2**
Construct sidewalk on east side of Highway between S 6th Ave. and Washington St.
- 8c Lake Lytle Trail**
Connect with Lake Lytle trail by extending sidewalk on east side of US 101 between N 6th Ave. and Lake Lytle trail.
- 8d Pedestrian Connections at South End**
See Figure 5

Bus Pull-Out Areas

- 9 CREATE BUS PULL-OUT AREAS**
Create bus pull-out areas at Tillamook County Transportation District stops to allow buses to pull out of traffic. Mark pull-outs for no parking.
- 10 Improve Critical Railroad Crossings**
- 10 See Figure 4**
- 11 Beach Street Improvements**
Add improvements to the intersection of US 101 and Beach St.

Beach access **3**
 High-priority pedestrian street crossing **5**
 Other important pedestrian crossing location **7**
 Parking area **7**
 Bus pull-out areas **9**

LEGEND

- Pedestrian/Bicycle Routes
- Proposed road extension
- US Highway 101
- City Limits

FIGURE 3

Project Recommendations

ROCKAWAY BEACH TRANSPORTATION PLAN



LEGEND

- Critical crossings to improve
- Lower priority crossings to improve
- Rockaway Beach City Limits
- Local Streets
- US 101
- Railroad
- Water Bodies
- Rivers

STEP 1 - IMPROVE "CRITICAL" CROSSINGS

- a. Prioritize the critical crossings
- b. Identify improvements needed for critical crossings to be adequately smooth for:
 - cars
 - bicycles
 - wheelchairs

STEP 2 - MONITOR USE

- a. How well do upgraded crossings work for users?
- b. Are unimproved crossings problematic for users?

STEP 3 - HOLD A PUBLIC PROCESS TO CONSIDER CROSSING CONSOLIDATION

- a. Discuss with community.
- b. Discuss with railroads and City.
- c. Consider criteria listed below for consolidating crossings.

CRITERIA FOR CONSOLIDATION:

Note: The Rockaway Beach Transportation Plan is not recommending rail crossing closures at this time. However, the following criteria have been established to help future consolidation. Consolidation would be considered if increasing safety to and on the highway becomes an issue.

- a. Alternate crossing locations are located nearby (within two blocks).
- b. Traffic volumes at the crossing are low and not expected to increase (due to change in land use, etc.) in the foreseeable future.
- c. Elevation change and/or sight distance make improvements to the crossing difficult.
- d. The crossing is not required for emergency access.



FIGURE 4
Process to Improve and/or Consolidate Railroad Crossings
 ROCKAWAY BEACH
 TRANSPORTATION PLAN

Project 8b. Continuous Sidewalks between S 7th Ave. and Washington St.



Connect the Nature Preserve area with a sidewalk on east side of US 101 to Downtown Rockaway Beach.



Trail into center of Nature Preserve property



Nature Preserve path - interior to parking area only. This project is currently under development by the Nature Preserve Committee.



Project 8d. a) Trails connecting neighborhood to Nature Preserve property



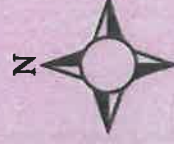
Pedestrian paths to Nature Preserve connecting Washington Street to downtown via paths.



Project 8d. b) Extending Juniper



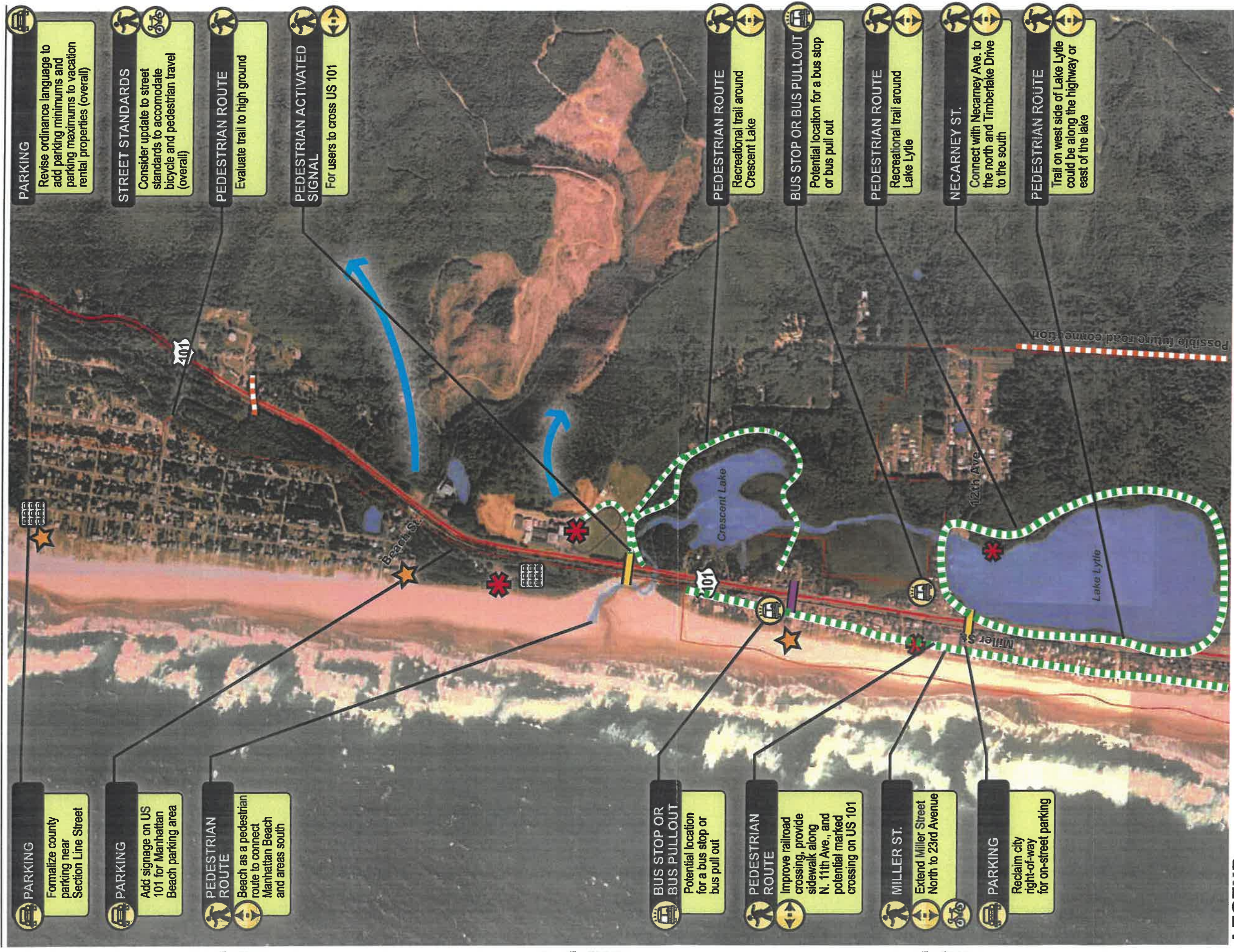
Extend Juniper as a pedestrian path connecting Washington Street to downtown via path.



NOTE: Location of trails is approximate and subject to a design review process and environmental considerations.

LEGEND

- Sidewalk
- Future parking area
- Conservancy path (assumed)
- Pedestrian path (locations approximate)



LEGEND

	Pedestrian Routes		Signed Beach Access		Existing Resources
	Possible future road		Traffic Generators		School
	Existing Tsunami route		Project Goals		Parking area
	High-priority pedestrian street crossing		Parking		North/South Connectivity
	Other important pedestrian crossing location		Pedestrian Route		Improved Pedestrian Crossings
	US Highway 101		Bicycle Route		Bus Stop or Bus Pullout
	City Limits				

(continued on Figure 2)

FIGURE 1
Section Line Street to N 7th Ave
Concepts Being Considered
 ROCKAWAY BEACH
 TRANSPORTATION PLAN

PARKING
 Revise ordinance language to add parking minimums and parking maximums to vacation rental properties (overall)

STREET STANDARDS
 Consider update to street standards to accommodate bicycle and pedestrian travel (overall)

PEDESTRIAN ROUTE
 Evaluate trail to high ground

PEDESTRIAN ACTIVATED SIGNAL
 For users to cross US 101

PEDESTRIAN ROUTE
 Recreational trail around Crescent Lake

BUS STOP OR BUS PULLOUT
 Potential location for a bus stop or bus pull out

PEDESTRIAN ROUTE
 Recreational trail around Lake Lytle

NECARNEY ST.
 Connect with Necarney Ave. to the north and Timberlake Drive to the south

PEDESTRIAN ROUTE
 Trail on west side of Lake Lytle could be along the highway or east of the lake

PARKING
 Formalize county parking near Section Line Street

PARKING
 Add signage on US 101 for Manhattan Beach parking area

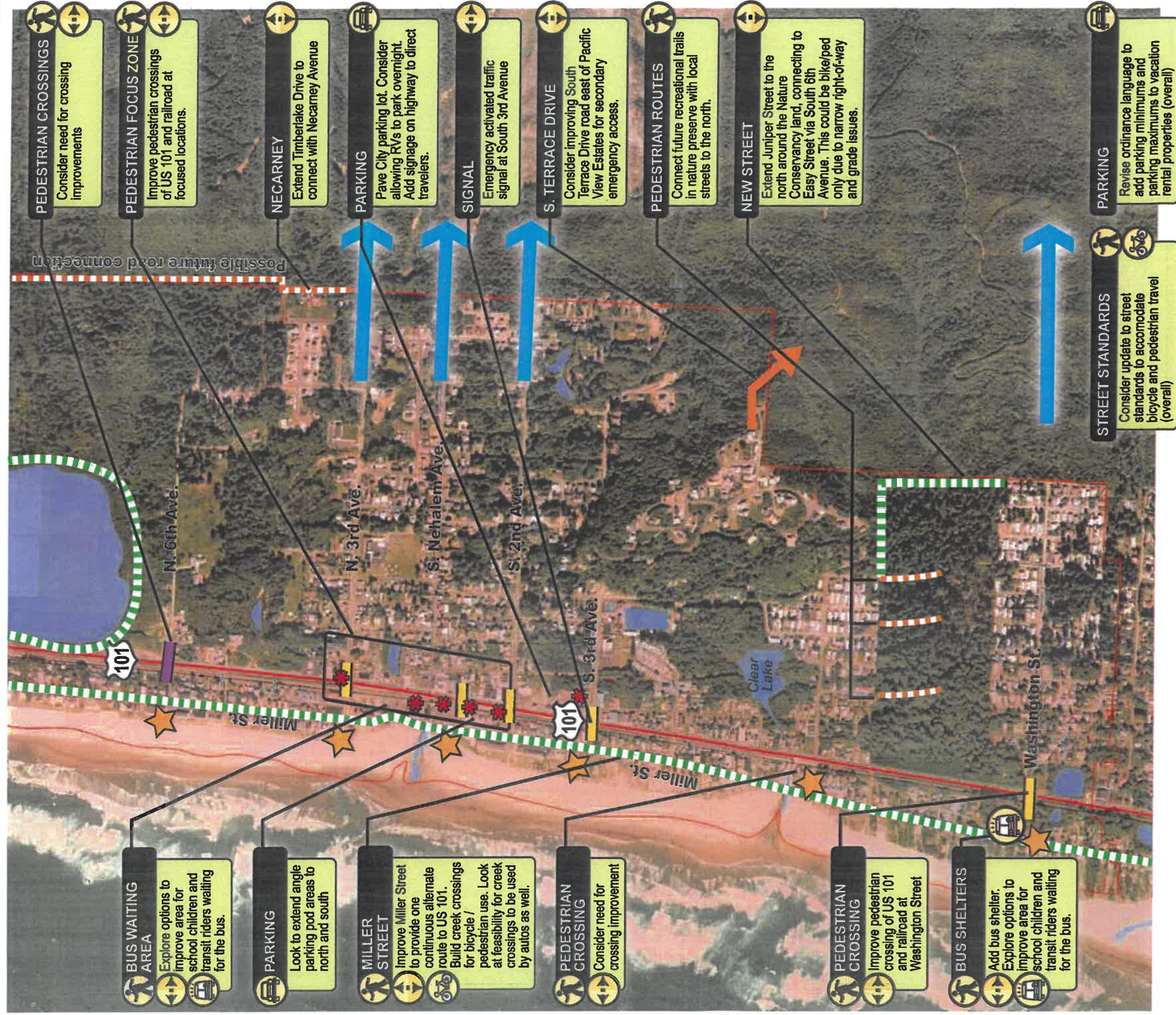
PEDESTRIAN ROUTE
 Beach as a pedestrian route to connect Manhattan Beach and areas south

BUS STOP OR BUS PULLOUT
 Potential location for a bus stop or bus pull out

PEDESTRIAN ROUTE
 Improve railroad crossing, provide sidewalk along N. 11th Ave., and potential marked crossing on US 101

MILLER ST.
 Extend Miller Street North to 23rd Avenue

PARKING
 Reclaim city right-of-way for on-street parking



LEGEND

	Pedestrian Routes		Project Goals		Existing Resources
	Possible future road		Signed Beach Access		Signed Beach Access
	Existing Tsunami route		Traffic Generators		Traffic Generators
	High-priority pedestrian street crossing		Parking		Parking area
	Other important pedestrian crossing location		Pedestrian Route		North/South Connectivity
	US Highway 101		Bicycle Route		Improved Pedestrian Crossings
	City Limits				Bus Stop or Bus Pullout

FIGURE 2
Washington Street
Concepts Being
Considered



LEGEND

- Critical crossings to improve
- Lower priority crossings to improve
- Rockaway Beach City Limits
- Local Streets
- US 101
- Railroad
- Water Bodies
- Rivers

STEP 1 - IMPROVE "CRITICAL" CROSSINGS

- a. Prioritize the critical crossings
- b. Identify improvements needed for critical crossings to be adequately smooth for:
 - cars
 - bicycles
 - wheelchairs

STEP 2 - MONITOR USE

- a. How well do upgraded crossings work for users?
- b. Are unimproved crossings problematic for users?

STEP 3 - HOLD A PUBLIC PROCESS TO CONSIDER CROSSING CONSOLIDATION

- a. Discuss with community.
- b. Discuss with railroads and City.
- c. Consider criteria listed below for consolidating crossings.

CRITERIA FOR CONSOLIDATION:

Note: The Rockaway Beach Transportation Plan is not recommending rail crossing closures at this time. However, the following criteria have been established to help future consolidation. Consolidation would be considered if increasing safety to and on the highway becomes an issue.

- a. Alternate crossing locations are located nearby (within two blocks).
- b. Traffic volumes at the crossing are low and not expected to increase (due to change in land use, etc.) in the foreseeable future.
- c. Elevation change and/or sight distance make improvements to the crossing difficult.
- d. The crossing is not required for emergency access.



FIGURE 3
Process to Improve and/or Consolidate Railroad Crossings
 ROCKAWAY BEACH
 TRANSPORTATION PLAN



LEGEND

- Critical crossings to improve
- Lower priority crossings to improve
- Rockaway Beach City Limits
- Local Streets
- US 101
- + Railroad
- Water Bodies
- Rivers

STEP 1 - IMPROVE "CRITICAL" CROSSINGS

- a. Prioritize the critical crossings
- b. Identify improvements needed for critical crossings to be adequately smooth for:
 - cars
 - bicycles
 - wheelchairs

STEP 2 - MONITOR USE

- a. How well do upgraded crossings work for users?
- b. Are unimproved crossings problematic for users?

STEP 3 - HOLD A PUBLIC PROCESS TO CONSIDER CROSSING CONSOLIDATION

- a. Discuss with community.
- b. Discuss with railroads and City.
- c. Consider criteria listed below for consolidating crossings.

CRITERIA FOR CONSOLIDATION:

Note: The Rockaway Beach Transportation Plan is not recommending rail crossing closures at this time. However, the following criteria have been established to help future consolidation. Consolidation would be considered if increasing safety to and on the highway becomes an issue.

- a. Alternate crossing locations are located nearby (within two blocks).
- b. Traffic volumes at the crossing are low and not expected to increase (due to change in land use, etc.) in the foreseeable future.
- c. Elevation change and/or sight distance make improvements to the crossing difficult.
- d. The crossing is not required for emergency access.



FIGURE 2
Process to Improve and/or Consolidate Railroad Crossings
 ROCKAWAY BEACH
 TRANSPORTATION PLAN

Option A: Sidewalk



Connect the Nature Preserve area with a sidewalk on east side of US 101 to Downtown Rockaway Beach.



Option B: Trail into center of Nature Preserve property



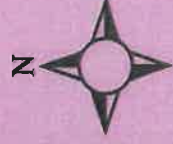
Nature preserve path - interior to parking area only.



Option C: Trails connecting neighborhood to Nature Preserve property



Pedestrian paths to Nature Preserve paths connecting Washington Street to downtown via paths.



Option D: Extending Juniper Street



Extend Juniper St. as a pedestrian path connecting Washington Street to downtown via path.

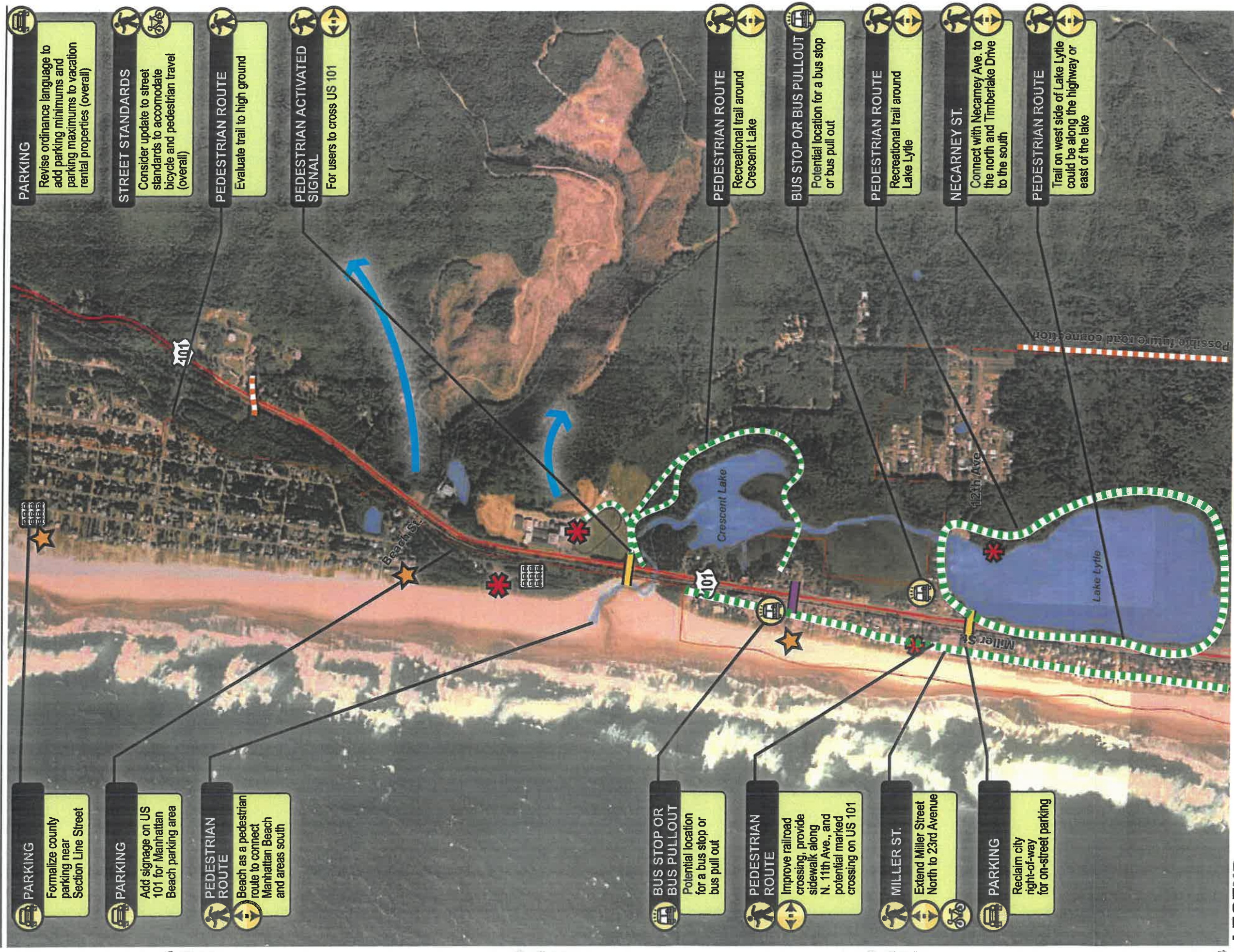


LEGEND

- Sidewalk
- Future parking area
- Nature Preserve path (assumed)
- Pedestrian path (locations approximate)

TBG121609114159PDX 392524.21.03 Rockaway_Conservancy_05.ctb

FIGURE 3
Pedestrian Connection Options – South End
ROCKAWAY BEACH TRANSPORTATION PLAN



LEGEND

- Pedestrian Routes
- Possible future road
- Existing Tsunami route
- High-priority pedestrian street crossing
- Other important pedestrian crossing location
- US Highway 101
- City Limits
- Signed Beach Access
- Traffic Generators
- Project Goals
- Parking
- Pedestrian Route
- Bicycle Route
- Existing Resources
- School
- Parking area
- North/South Connectivity
- Improved Pedestrian Crossings
- Bus Stop or Bus Pullout

(continued on Figure 2)

FIGURE 1
Section Line Street to N 7th Ave
Concepts Being Considered
 ROCKAWAY BEACH
 TRANSPORTATION PLAN

PARKING
 Revise ordinance language to add parking minimums and parking maximums to vacation rental properties (overall)

STREET STANDARDS
 Consider update to street standards to accommodate bicycle and pedestrian travel (overall)

PEDESTRIAN ROUTE
 Evaluate trail to high ground

PEDESTRIAN ACTIVATED SIGNAL
 For users to cross US 101

PEDESTRIAN ROUTE
 Beach as a pedestrian route to connect Manhattan Beach and areas south

PARKING
 Formalize county parking near Section Line Street

PARKING
 Add signage on US 101 for Manhattan Beach parking area

BUS STOP OR BUS PULLOUT
 Potential location for a bus stop or bus pull out

PEDESTRIAN ROUTE
 Improve railroad crossing, provide sidewalk along N. 11th Ave., and potential marked crossing on US 101

MILLER ST.
 Extend Miller Street North to 23rd Avenue

PARKING
 Reclaim city right-of-way for on-street parking

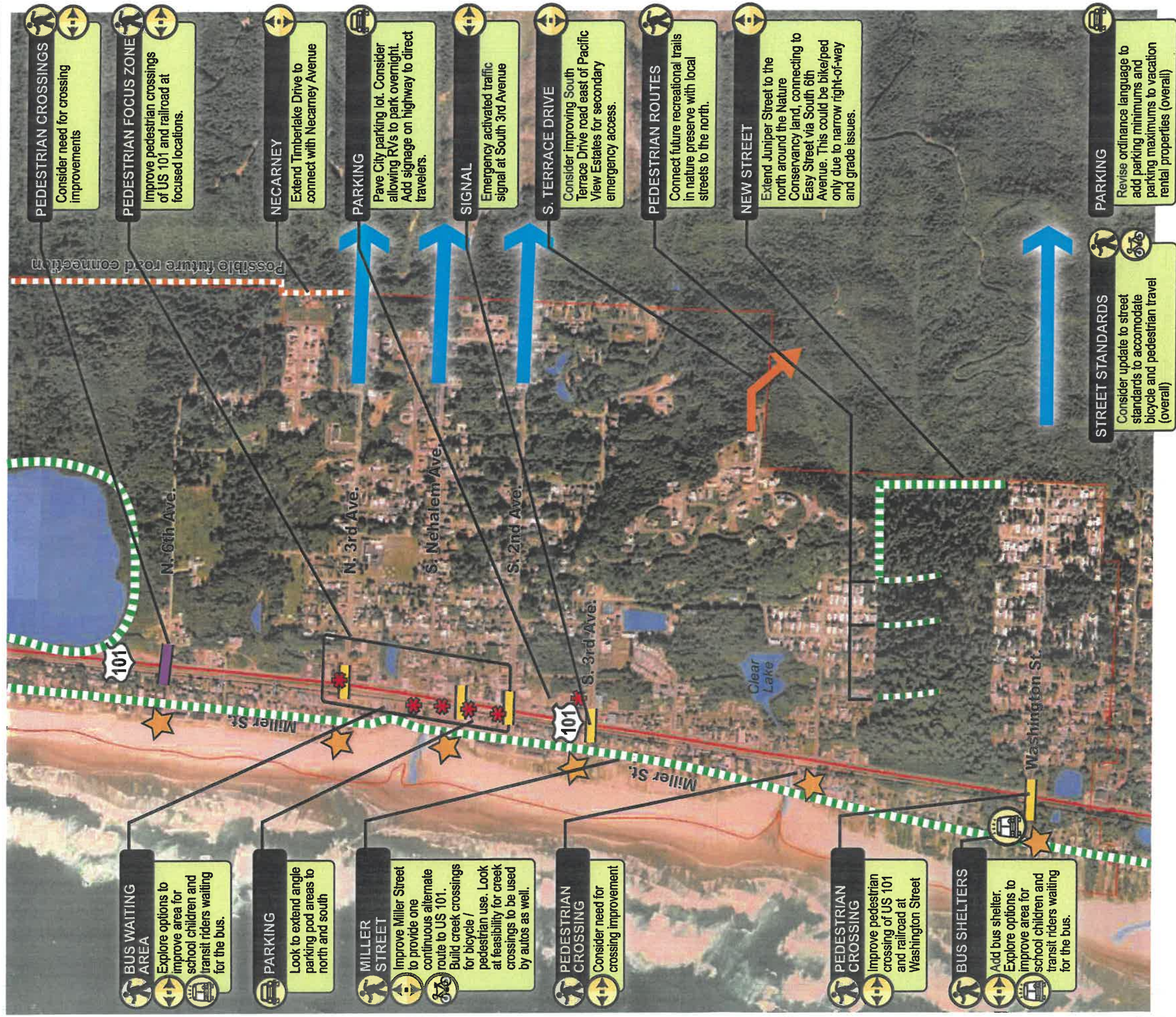
PEDESTRIAN ROUTE
 Recreational trail around Crescent Lake

BUS STOP OR BUS PULLOUT
 Potential location for a bus stop or bus pull out

PEDESTRIAN ROUTE
 Recreational trail around Lake Lytle

NECARNEY ST.
 Connect with Necarney Ave. to the north and Timberlake Drive to the south

PEDESTRIAN ROUTE
 Trail on west side of Lake Lytle could be along the highway or east of the lake



LEGEND

	Pedestrian Routes		Existing Resources
	Possible future road		Signed Beach Access
	Existing Tsunami route		Traffic Generators
	High-priority pedestrian street crossing		Parking area
	Other important pedestrian crossing location		North/South Connectivity
	US Highway 101		Improved Pedestrian Crossings
	City Limits		Bus Stop or Bus Pullout
	Project Goals		Pedestrian Route
			Bicycle Route

FIGURE 2
Washington Street
Concepts Being Considered



LEGEND

- Critical crossings to improve
- Lower priority crossings to improve
- Rockaway Beach City Limits
- Local Streets
- US 101
- Railroad
- Water Bodies
- Rivers

STEP 1 - IMPROVE "CRITICAL" CROSSINGS

- a. Prioritize the critical crossings
- b. Identify improvements needed for critical crossings to be adequately smooth for:
 - cars
 - bicycles
 - wheelchairs

STEP 2 - MONITOR USE

- a. How well do upgraded crossings work for users?
- b. Are unimproved crossings problematic for users?

STEP 3 - HOLD A PUBLIC PROCESS TO CONSIDER CROSSING CONSOLIDATION

- a. Discuss with community.
- b. Discuss with railroads and City.
- c. Consider criteria listed below for consolidating crossings.

CRITERIA FOR CONSOLIDATION:

Note: The Rockaway Beach Transportation Plan is not recommending rail crossing closures at this time. However, the following criteria have been established to help future consolidation. Consolidation would be considered if increasing safety to and on the highway becomes an issue.

- a. Alternate crossing locations are located nearby (within two blocks).
- b. Traffic volumes at the crossing are low and not expected to increase (due to change in land use, etc.) in the foreseeable future.
- c. Elevation change and/or sight distance make improvements to the crossing difficult.
- d. The crossing is not required for emergency access.



FIGURE 3
Process to Improve and/or Consolidate Railroad Crossings
 ROCKAWAY BEACH
 TRANSPORTATION PLAN



LEGEND

- Critical crossings to improve
- Lower priority crossings to improve
- Rockaway Beach City Limits
- Local Streets
- US 101
- Railroad
- Water Bodies
- Rivers

STEP 1 - IMPROVE "CRITICAL" CROSSINGS

- a. Prioritize the critical crossings
- b. Identify improvements needed for critical crossings to be adequately smooth for:
 - cars
 - bicycles
 - wheelchairs

STEP 2 - MONITOR USE

- a. How well do upgraded crossings work for users?
- b. Are unimproved crossings problematic for users?

STEP 3 - HOLD A PUBLIC PROCESS TO CONSIDER CROSSING CONSOLIDATION

- a. Discuss with community.
- b. Discuss with railroads and City.
- c. Consider criteria listed below for consolidating crossings.

CRITERIA FOR CONSOLIDATION:

Note: The Rockaway Beach Transportation Plan is not recommending rail crossing closures at this time. However, the following criteria have been established to help future consolidation. Consolidation would be considered if increasing safety to and on the highway becomes an issue.

- a. Alternate crossing locations are located nearby (within two blocks).
- b. Traffic volumes at the crossing are low and not expected to increase (due to change in land use, etc.) in the foreseeable future.
- c. Elevation change and/or sight distance make improvements to the crossing difficult.
- d. The crossing is not required for emergency access.

FIGURE 2
Process to Improve and/or Consolidate Railroad Crossings

Option A: Sidewalk



Connect the Nature Preserve area with a sidewalk on east side of US 101 to Downtown Rockaway Beach.



Option B: Trail into center of Nature Preserve property



Nature preserve path - interior to parking area only.



Option C: Trails connecting neighborhood to Nature Preserve property



Pedestrian paths to Nature Preserve path connecting Washington Street to downtown via paths.



Option D: Extending Juniper Street



Extend Juniper St. as a pedestrian path connecting Washington Street to downtown via path.



LEGEND

- Sidewalk
- Future parking area
- Nature Preserve path (assumed)
- Pedestrian path (locations approximate)

TBG121609114159PDX 392524-21.03 Rockaway_Conservancy_05.cts

FIGURE 3
Pedestrian Connection Options – South End
ROCKAWAY BEACH TRANSPORTATION PLAN