

An aerial photograph of Rockaway Beach, Oregon. The image shows a wide, sandy beach curving along the coast. To the left, the ocean waves are breaking onto the shore. To the right, a residential neighborhood is visible, with houses and a road. In the background, there are rolling hills and mountains under a cloudy sky.

City of Rockaway Beach Drinking Water Protection Plan

Source Water Protection Plan Development
Advisory Committee (SPPDAC)

Kickoff Meeting

April 29, 2024

Agenda

- What is a Drinking Water Protection Plan (DWPP)?
- Why develop the DWPP?
- DWPP Components
- DWPP Development Process
- SPPDAC Meetings Approach and Schedule

What is a DWPP?

- An action plan for implementing drinking water protection strategies
 - Goal
 - To reduce risks to the City of Rockaway Beach's primary drinking water source, Jetty Creek
 - Involves
 - Identifying risks
 - Developing strategies
 - Developing an implementation approach

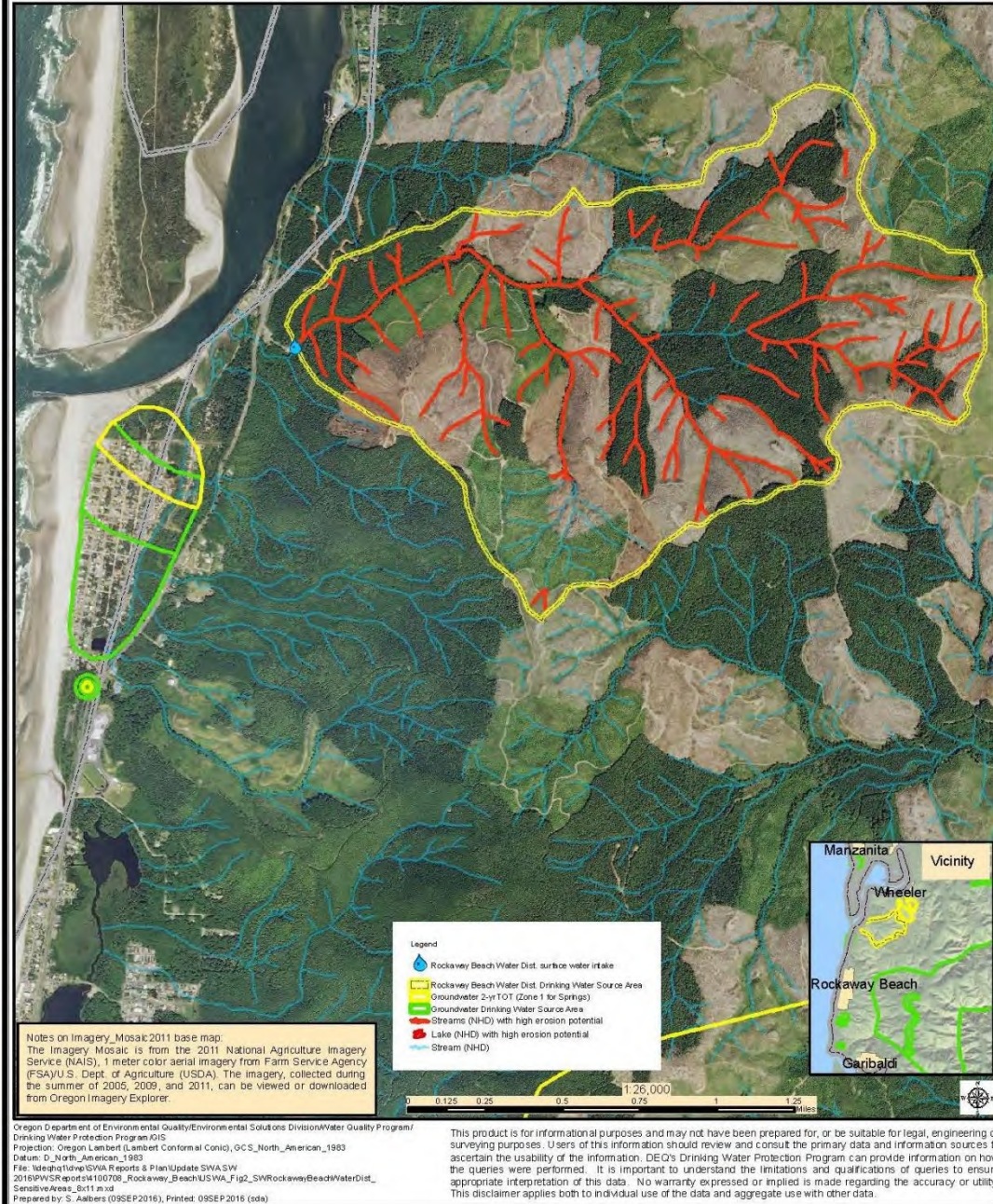
Why develop a DWPP?

- **Benefits:**
 - Build partnerships to address risks to water quality and quantity challenges
 - Technical assistance
 - Enhance long-term planning
 - Strengthen applications for implementation funding
 - Increase community education about its water source and drinking water protection

Rockaway Beach's Primary Water Source: Jetty Creek

Back-up source: groundwater

Figure 2. Rockaway Beach Water District (PWS 00708) Drinking Water Source Area Erosion Potential (See Appendix 2 for Key to map details and metadata)



DWPP Components



Risks

Identify and prioritize potential sources of contamination and risks to drinking water sources



Strategies

Plan for reducing, eliminating, or mitigating risks



Implementation

Plan for implementing strategies



Contingency and Future Planning

Describe planning regarding potential loss of water supply
Consider potential future water sources

DWPP Development Process

- Background
 - DEQ Source Water Assessment (2016)
 - OHA Grant (2023)
- Develop DWPP with SPPDAC, Team, and Public Input (2024-2025)

SPPDAC



Objective: To provide input and guidance during plan development



Six meetings

DWPP Team



Objective: To provide input and guidance during plan development



Spectrum of knowledge and expertise:

- Local government
- Private forestry
- Interest groups
- State and Federal agencies



Six DWPP Team meetings

Estimated Schedule *SPPDAC to be added*

Team Kickoff Meeting: Risks	May 2024
Team Meeting: Risks and prioritization	June 2024
Team Meeting: Risks and strategies brainstorm	July 2024
Public Meeting	August/September 2024
Team Meeting: Strategies	September 2024
Team Meeting: Implementation plan	October 2024
Team Meeting: Draft DWPP	November/December 2024
Public Meeting	January 2025
Draft DWPP to the City, SPPDAC, City Council	February/March 2025
Submit Final Draft DWPP to DEQ and OHA	March 2025

Identifying and Prioritizing Risks

- Utilizing source water assessment, local knowledge, and technical experts
- Categorizing risks
- Prioritization, such as by likelihood and severity of impact

		SEVERITY →		
		1	2	3
LIKELIHOOD ↓	1	LOW - 1 -	LOW - 2 -	MEDIUM - 3 -
	2	LOW - 2 -	MEDIUM - 4 -	HIGH - 6 -
	3	MEDIUM - 3 -	HIGH - 6 -	HIGH - 9 -

Risk Examples

- Natural Processes
 - Drought and low streamflows
 - Earthquakes
 - Wildfire
 - Highly erodible soils (SWA)
- Forestry
 - Clearcuts (SWA)
- Industrial
 - Mining (SWA)



Identifying Strategies

Utilizing local knowledge, technical expertise, and available relevant documents

Categorizing strategies

A strategy could address multiple risks

Strategy Examples

- Forest landowner coordination
 - Coordinate about maintenance needs for access roads and culverts to reduce soil erosion
- Public outreach
 - Communicate to the public about water conservation to reduce water demand

Implementation Plan

- Describes activities to implement strategies
- Identifies timing, products, and potential partners
- Example: Public Outreach
 - Phase 1: Develop outreach materials
 - Phase 2: Develop signage
 - Phase 3: Hold events

Contingency Plan and Future Sources

- Contingency Plan
 - Prescriptive
 - Utilizing City's Emergency Response Plan and other City plans (e.g., Water Management and Conservation Plan)
 - Example:
 - Identify short-term and long-term replacement potable water supplies
 - Identify key personnel
- Future Water Sources
 - Opportunity to consider risks and strategies for any new water sources planned in the next 20 years

SPPDAC Meetings Approach and Schedule

- Approach
 - Reviewing preferences
- Schedule
 - Following DWPP Team meetings?
 - Next meeting topic
 - Risks and prioritization approach

Thank you!

GSI Team

Suzanne de Szoeki

sdeszoeki@gsiws.com

(541) 257-9006

Mikaela Clarke

mclarke@gsiws.com

(971) 212-0276

