

Rockaway Beach Source Water Protection Plan

Draft Plan Town Hall
March 18, 2025



Welcome & Purpose

- Housekeeping
 - Facilitators: Suzanne de Szoeke and Mikaela Clarke
 - GSI Water Solutions, Inc.
 - Contact info:
 - sdeszoeke@gsiws.com
 - 541-257-9006
 - In-person attendees: please silence cell phones
 - Online attendees: please mute and keep video off during the presentation
 - The meeting will be recorded

Welcome & Purpose

- Agenda
 - Public Comment
 - Overview of the Source Water Protection Plan (SWPP)
 - Background
 - Risk assessment
 - Strategies to address risks
 - Implementation plan
 - Contingency plan
 - Future water sources
 - Question & answer

**Goal: To reduce risks to the
City of Rockaway Beach's
primary drinking water
source, Jetty Creek.**

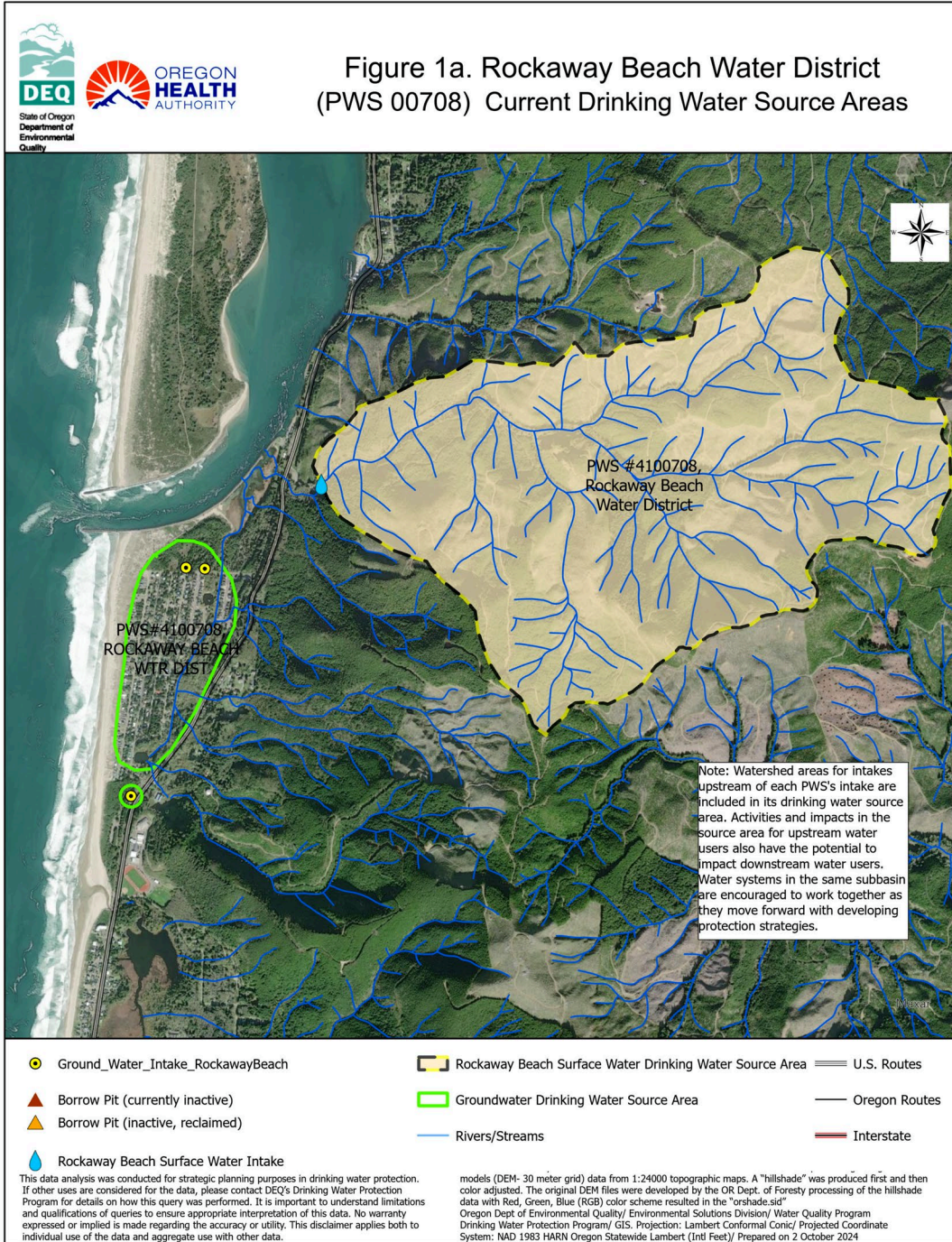
A wide-angle photograph of a beach. The sky is a vibrant blue with wispy white clouds. The ocean is visible in the distance with white-capped waves. The beach is sandy and stretches across the middle ground. In the foreground, there are large, dark, jagged rocks. On the right side, there are some buildings and a utility pole. The overall scene is bright and clear.

PUBLIC COMMENT (Standard City format)

- Sign up in-person and raise hands on zoom**
- Timed**

Rockaway Beach's Primary Water Source: Jetty Creek

Back-up source: groundwater



SWPP Development Process

- Background
 - DEQ Source Water Assessment (2016)
 - OHA Drinking Water Source Protection Fund Grant (2023)
- Develop SWPP from 2024-2025 with:
 - Sourcewater Protection Plan Development Advisory Committee
 - Source Water Protection Plan Team, and
 - Public Input

SWPP Team and SPPDAC

- Source Water Protection Plan Team (Team)
 - Local stakeholders & technical experts (~12 members) to guide Plan development
- Sourcewater Protection Plan Development Advisory Committee (SPPDAC)
 - Established by City Council to provide reviews and community input during Plan development (~7 members)

SWPP Components

Risks

- Identify and prioritize potential sources of contamination and risks to drinking water sources

Strategies

- Plan for reducing, eliminating, or mitigating risks

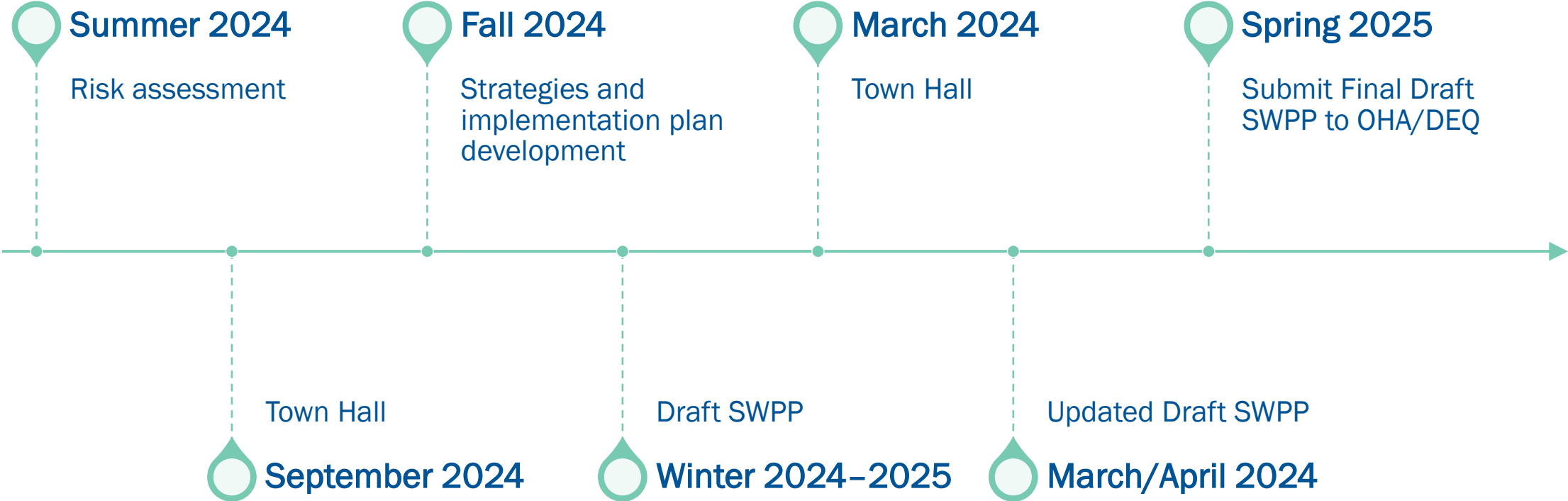
Implementation

- Plan for implementing strategies

Contingency and Future Planning

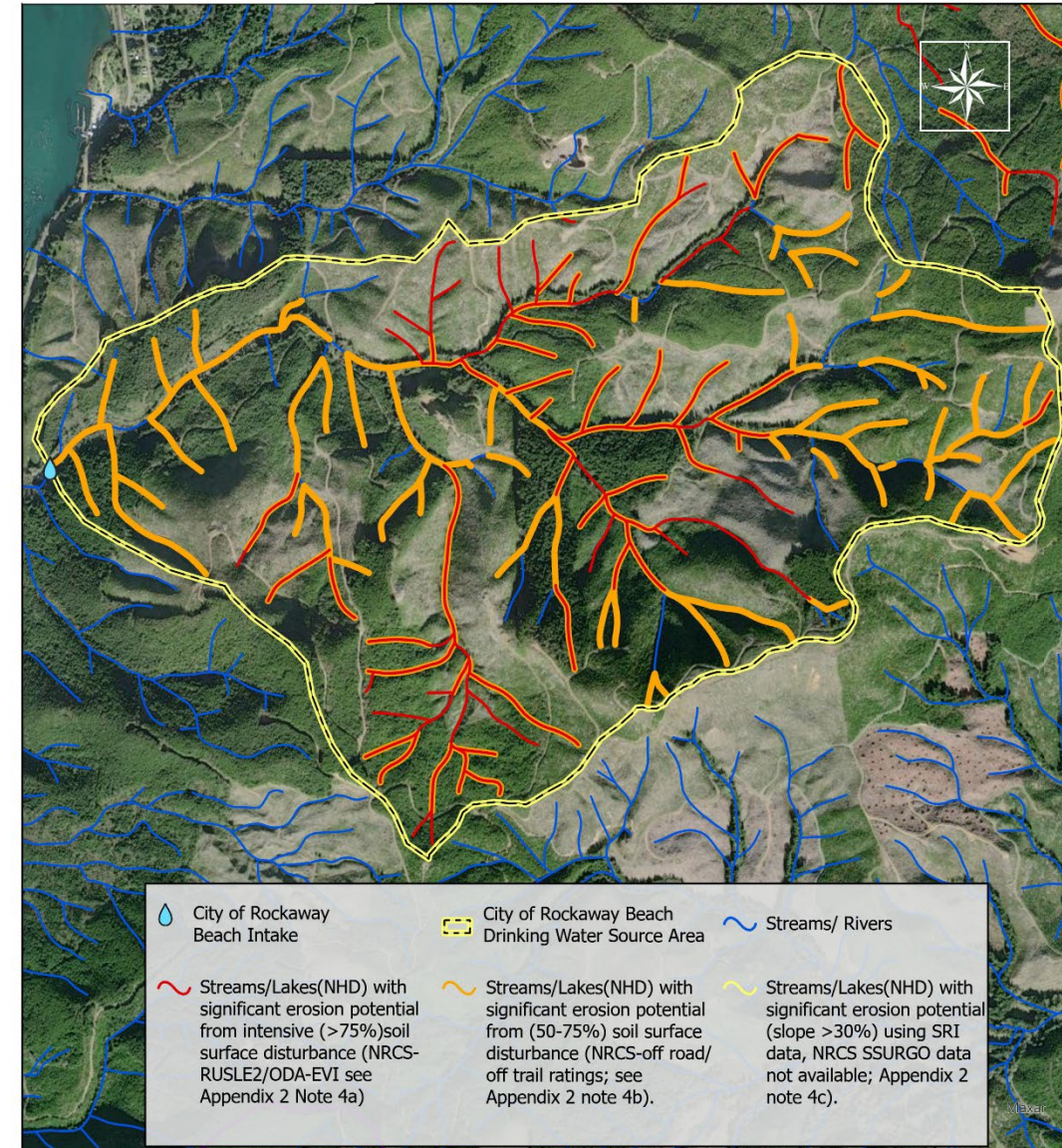
- Describe plans regarding potential loss or reduction of water supply
- Consider potential future water sources

Timeline



Risk Assessment Process

- Source Water Assessment
- SWPP Team knowledge
- Categorized by land use/activity/source



Risk Prioritization

- Scale 1 (low) to high (5): likelihood and consequence
- Used to guide allocation of resources to address risks
 - Select strategies to address highest risks to drinking water first

Likelihood	Impact				
	Insignificant (1)	Minor (2)	Moderate (3)	Severe (4)	Catastrophic (5)
Rare/very unlikely (1)	Low	Low	Low	Low	Medium
Unlikely (2)	Low	Low	Medium	Medium	Medium
Possible (3)	Low	Medium	Medium	Medium	High
Likely (4)	Low	Medium	Medium	High	High
Almost certain (5)	Medium	Medium	High	High	High

Potential Risks to Jetty Creek



Risks and Rankings

Natural Hazards

- Drought and low flows (5,5)
- Climate change (5,5)
- Highly erodible soils (4,4)
- Landslides (4,3)
- Earthquake (3,5)
- Tsunami (3,5)
- Severe storms (4,3)
- Wildfire (2,3)
- Volcanic Ashfall (1,3)

Forestry

- Clearcut harvest (5,3-4)
- Pesticides/herbicides (5,4)
- Riparian impacts (3,3)
- Access roads (2,2)
- Borrow pits (1,1)

Municipal

- Vandalism (2,4)

Likelihood and consequence (1=low, 5=high)

Risks and Rankings

Land Use

- Unauthorized camping (3,2)
- Recreation (3,2)

Demands on Water Supply (outside of watershed)

- Development (4,4)
- Tourism (4,4)

Likelihood and consequence (1=low, 5=high)

Strategies to Address Risks



Critical Area Protection



Data Collection and Monitoring Programs



Watershed Restoration



Sediment and Erosion Control



Water Supply and Emergency Planning



Communications and Public Engagement



Water Conservation

Critical Area Protection

- Land acquisition and/or conservation easements
- Enables management for drinking water quality/quantity goals vs. other land-use goals



Data Collection & Monitoring Programs

- Track watershed conditions over time
 - Gather existing historical watershed data
- Water quantity
 - Continue routine testing
- Water quality testing
 - Continue routine turbidity measurements



Watershed Restoration

- Enhance water retention in watershed
 - Natural or built storage
 - Beaver habitat
- Enhance water quality
 - Riparian buffer
 - Large woody debris
 - Invasive plant removal



Sediment and Erosion Control

- Address high turbidity in Jetty Creek
 - Target areas: steep slopes, highly erodible soils, high landslide potential
- Road and culvert maintenance
- Riparian planting
- Work with landowners



Water Supply and Emergency Planning

- Source water protection in emergency plans
- Update Water Master Plan (WMP) and Water Management and Conservation Plan (WMCP)
- Disaster preparedness
- Climate change preparedness
- Projected demands from tourism and development
- Infrastructure needs

Communications and Public Engagement

- Communication with landowners and partners
 - Management practices & plans
 - Information & data exchange
 - Jetty Creek Working Group
- Public engagement forums

Water Conservation Measures



Conservation outreach

Social media

Events

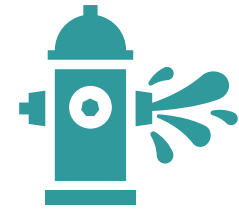
Tourists and rental managers



Ordinances

Water-efficient fixture standards

Water use limits for new builds



Infrastructure

Leak detection and repairs

Maintenance and upgrades

Implementation Plan

- Specific activities to implement strategies
- Three phases
 1. Data collection, establishing partnerships, high-priority risks
 2. Strengthening partnerships and securing funding
 3. Substantial planning or funding needed, low-priority risks



Phase 1

- Critical Area Protection
 - Plan for acquisitions or easements
 - Develop a broad Forest Stewardship Plan
 - Communicate with landowners and partners about management strategies
- Data Collection and Monitoring
 - Inventory existing data and monitoring efforts to prioritize data needs
 - Detailed risk analyses of critical areas if needed
 - Partner with organizations for technical assistance

Phase 1

- Watershed Restoration
 - Identify high-priority areas
 - Coordinate with landowners and organizations
 - Explore partnerships
- Sediment and Erosion Control
 - Identify high-priority areas and pursue projects
 - Conduct erosion/landslide studies as needed
 - Research technical assistance programs
 - Communicate with landowners

Phase 1

- Water Supply and Emergency Planning
 - Update supply plans and incorporate source water protection in emergency plans
 - Assess future water needs and explore alternative sources
 - Identify partnerships
- Communications and Public Engagement
 - Maintain communications with landowners and partners
 - Annually enroll in Forest Activity Electronic Reporting and Notification System (FERNS)
 - Communicate source water protection efforts to the public

Phase 1

- Water Conservation Measures
 - Continue water loss reduction initiatives and water conservation messaging to the public
 - Explore funding for additional conservation measures
 - Identify partnerships and support resources

Phase 2

- Critical Area Protection
 - Complete a land acquisition or conservation easement
 - Refine and implement a Forest Stewardship Plan
 - Continue community engagement efforts
- Data Collection and Monitoring
 - Continue existing monitoring efforts
 - Apply for funding and implement potential new monitoring programs
 - Evaluate City's other surface water rights

Phase 2

- Watershed Restoration
 - Continue planning & implementing restoration projects with partners
 - Pursue funding for and implement new projects as needed
- Sediment and Erosion Control
 - Pursue funding for and implement high-priority projects
 - Create/build on road maintenance plans for acquired lands
 - Coordinate with neighboring landowners

Phase 2

- Water Supply and Emergency Planning
 - Infrastructure projects
 - Transportation plan for emergency access roads
 - Assess vandalism vulnerabilities in watershed
- Communications and Public Engagement
 - Source water protection outreach
 - Recreation practices outreach
 - Communicate with wildfire response planners
 - Maintain FERNS enrollment

Phase 2

- Water Conservation Measures
 - Implement additional conservation measures identified in Phase 1
 - Continue pursuing partnerships
 - Implement water conservation ordinances

Phase 3



EXPAND ON
PREVIOUS EFFORTS



SEEK FUNDING



STRENGTHEN
PARTNERSHIPS



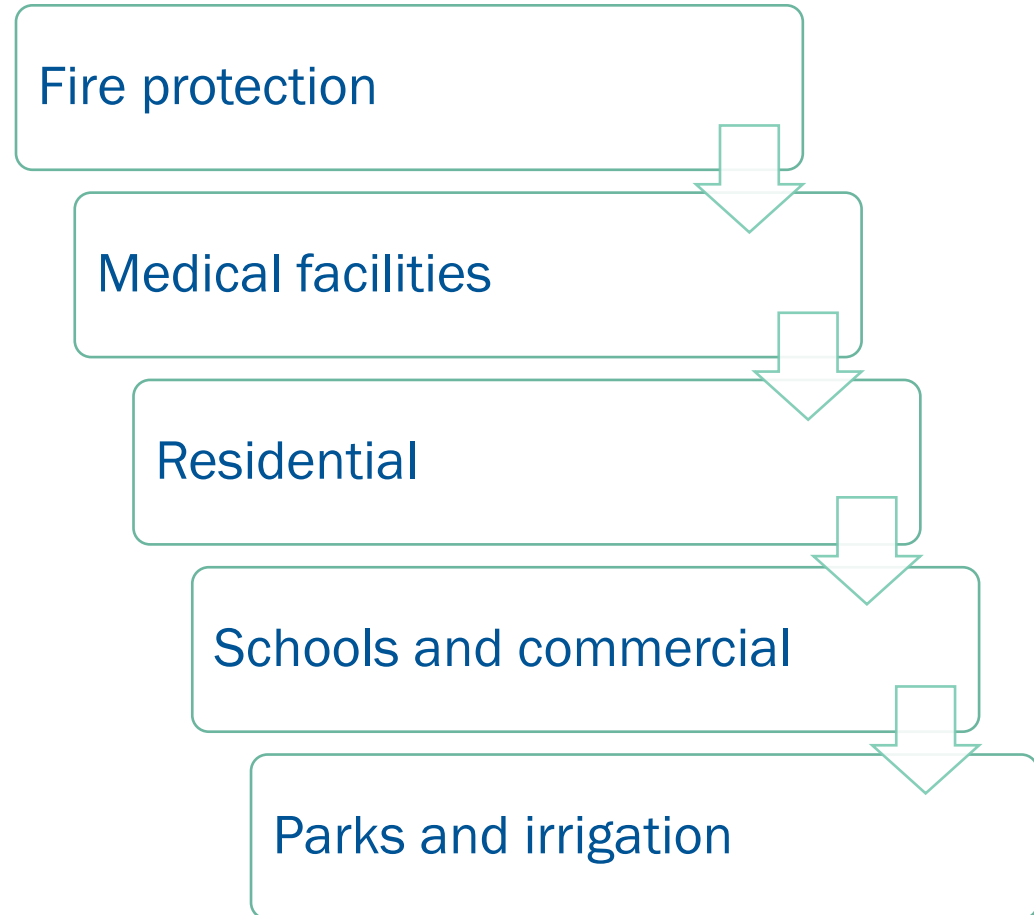
TRACK AND
RESPOND TO
CHANGES

Contingency Plan

- Actions if water supply is reduced or unavailable
- Required for State approval
- Coordinated with other plans
 - Emergency Operations Plan (EOP)
 - WMCP

Contingency Plan Elements

- Threats to water supply
 - Risks identified in SWPP
 - Natural disasters and human-related events
- Prioritization of water usage



Contingency Plan Elements

- Response to potential incidents
 - Action checklist in EOP
- Key personnel
 - Roles and responsibilities



Contingency Plan Elements

- Replacement of water supply
 - Short-term: water curtailment, adjust use of sources
 - Long-term: infrastructure
- Conservation measures
 - WMCP curtailment plan
 - 4 stages

Contingency Plan Elements

- Plan testing, review, and update
 - At least every 5 years
- Personnel training
- Public education
 - Website & outreach materials
 - Public Information Officer for emergencies
- Logistical and financial resources



Future Water Sources

- No immediate plans for expansion of water system
- WMP and WMCP updates
 - Evaluating future water demands and assess existing supply
- Potential additional future sources (from 2020 WMCP):
 - Water rights held in reserve
 - Potential interconnection with Manzanita/Wheeler or Garibaldi systems



Public Feedback

- Questions or comments about the SWPP?
 - Raise your hand or use Zoom chat
- Meeting recording will be available on City website
- Send follow-up questions/comments to:
 - Suzanne de Szoeki
 - sdeszoeki@gsiws.com
 - (541) 257-9006

Next Steps

- Incorporate feedback into Draft SWPP
- City Council Approval
- Submit Final Draft SWPP to OHA and DEQ for approval in Spring 2025



Thank you!

Suzanne de Szoeki
sdeszoeki@gsiws.com
541-257-9006

Mikaela Clarke
mclarke@gsiws.com
971-200-8501